



VERTIX

OUR PARTNERS



GREATER



VERTIX



NAJD INSPIRATION

ABOUT

VERTIX

VERTIX is a high-end design and execution firm specializing in VIP architecture, interior design, and landscape solutions, delivering refined, luxurious, and timeless spaces. Our approach combines creativity, precision, and attention to detail, ensuring every project reflects excellence and exclusivity.

We operate across Saudi Arabia, Jordan (Amman), and Russia, supported by a strong and experienced team in each location. This international presence allows us to understand diverse markets while maintaining a consistent, world-class design standard.

At VERTIX, we are not only focused on interiors and buildings, but we are also fully capable of delivering large-scale urban design, master planning, and tower projects, providing comprehensive solutions from concept to execution.

Our capabilities are strengthened through global partnerships, including a reliable network of suppliers in China, enabling us to source custom-made materials, unique finishes, and bespoke chandeliers. We also collaborate with specialized partners for backup design support and advanced production solutions, ensuring flexibility and innovation in every project.

With the support of our sister company, NAJD Inceptions, we bring over 10 years of expertise in MEP systems execution, allowing us to deliver fully integrated projects with strong technical coordination and efficiency.

At VERTIX, we pride ourselves on delivering complete, high-end turnkey solutions, driven by professionalism, innovation, and a commitment to exceeding client expectations.



CONTACT

+966 59 238 8041

+966 59 391 1905

Projects@vertixmepsystems.com

Vertixmepsystems.com

Riyadh - Saudi Arabia





VERTIX

We specialize in the design of ultra-luxury mansions and private palaces, delivering bespoke spaces tailored for VIP clients and high-end lifestyles. Our approach combines timeless elegance with bold, contemporary expression, ensuring every project reflects exclusivity and prestige. We curate and integrate the finest luxury furniture brands, including Boca do Lobo, to achieve exceptional interior experiences defined by craftsmanship, artistry, and uniqueness.

The showcased design represents a confidential private palace project, demonstrating our ability to deliver top-tier, discreet, and highly refined environments at the highest international standards.





VERTIX NAJD INSPIRATION

With over 10 years of proven experience in MEP (Mechanical, Electrical, and Plumbing) systems, we collaborate closely with our sister company, Najd Inspiration, to deliver high-performance, reliable, and fully integrated engineering solutions.

Our expertise covers design, execution, and supervision across a wide range of projects, ensuring efficiency, compliance with international standards, and seamless coordination with architectural and construction disciplines. Together, we are committed to delivering quality-driven MEP systems that enhance functionality, sustainability, and long-term value for every project.

 **InfraRoad Binyah L.L.C.** ON going project 4D

INFRAROAD-BINYAH JV
PART 4D - SOLID WASTE TRANSFER HUB - (RCD-SWTH)
Project: QIDDIYA RESORT CORE BULK UTILITIES PACKAGE 4 - QIDDIYA
Installation of MEP works





We specialize in the design, development, and supply of high-end custom chandeliers tailored to each project's unique identity. Our approach combines architectural vision with artistic craftsmanship, ensuring that every chandelier becomes a statement piece that enhances the overall interior concept.

From classic crystal compositions to contemporary sculptural forms, we create bespoke designs that reflect luxury, elegance, and precision. Each piece is carefully developed through detailed design studies, material selection, and lighting performance considerations to achieve both aesthetic impact and functional excellence.

Through our strong partnerships and manufacturing network in China, we are able to deliver fully customized chandeliers with exceptional quality, competitive pricing, and advanced production capabilities. This allows us to produce unique, made-to-order lighting solutions, including special finishes, custom dimensions, and intricate detailing that are not available in standard market products.

Our process ensures seamless integration from concept to installation—offering clients exclusive, one-of-a-kind chandelier designs that elevate spaces into refined, luxurious environments.



 ARCHITECTURE & INTERIOR



Private Government VIP Office - Riyadh - KSA

Private Government VIP it's an office in Riyadh would combine elements of opulence, sophistication, and cultural significance. The space would likely incorporate high-end materials such as polished marble, rich wood paneling, and custom-designed furniture, alongside subtle nods to traditional Arabian aesthetics. Gold accents, intricate Islamic geometric patterns, and luxurious textiles like silk and velvet would be used to enhance the sense of prestige.

The design would focus on creating a professional yet welcoming environment, with spacious layouts and strategic lighting to highlight key architectural features. Modern technology would be seamlessly integrated, ensuring functionality without compromising on elegance. Custom artwork or artifacts reflecting Saudi heritage and history might adorn the walls, while large windows would offer views of the city, fostering a sense of openness.



Private Government VIP Office - Riyadh - KSA



البواني
AL BAWANI

We successfully delivered the full interior design for a Ministry building in Riyadh, in collaboration with Al Bawani Company.

Acting as independent freelancers, we were responsible for developing comprehensive design solutions that align with governmental standards and high-end functional requirements. The project reflects our capability to handle large-scale, complex environments, ensuring a balance between aesthetics, efficiency, and user experience. Our contribution demonstrates strong expertise in managing professional collaborations and delivering high-quality results within structured project frameworks.



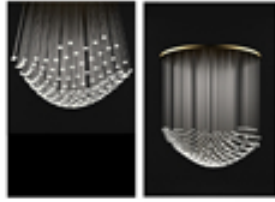
Private Government Royal VIP Office - Riyadh - KSA

Private Government VIP it's an office in Riyadh would combine elements of opulence, sophistication, and cultural significance. The space would likely incorporate high-end materials such as polished marble, rich wood paneling, and custom-designed furniture, alongside subtle nods to traditional Arabian aesthetics. Gold accents, intricate Islamic geometric patterns, and luxurious textiles like silk and velvet would be used to enhance the sense of prestige.

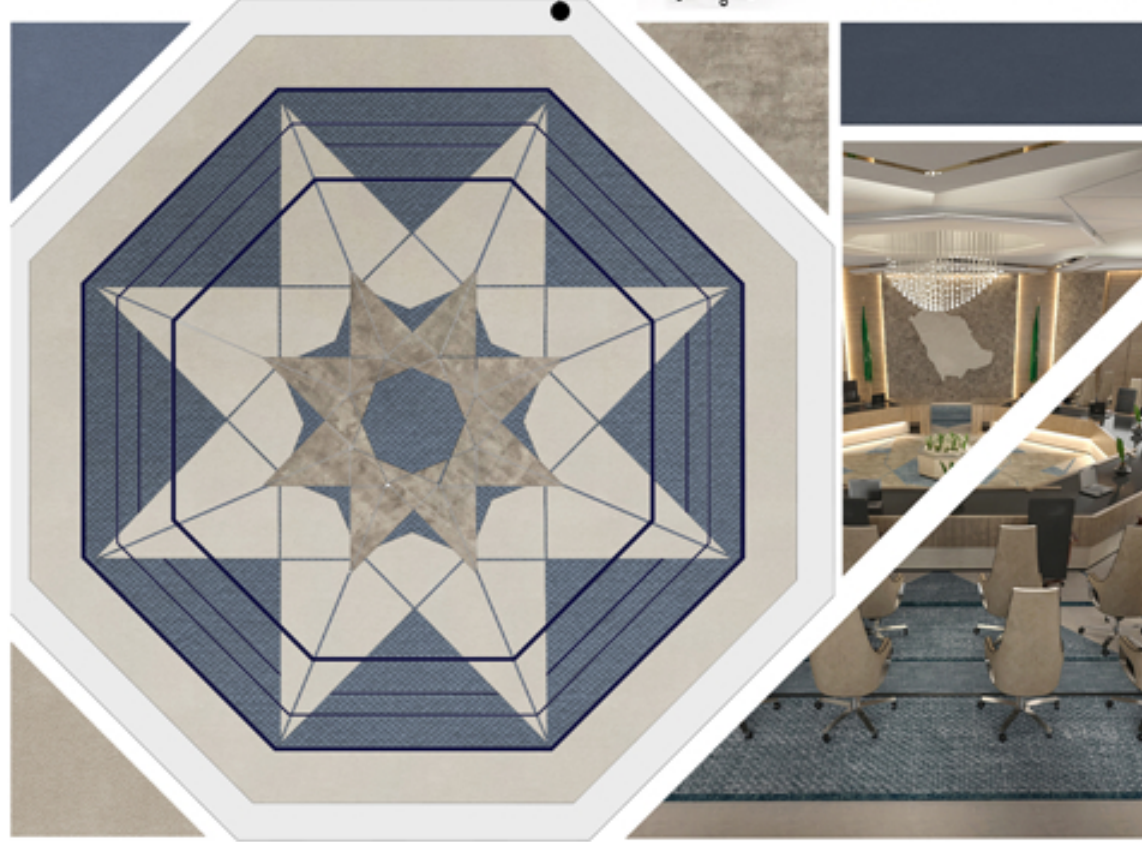
The design would focus on creating a professional yet welcoming environment, with spacious layouts and strategic lighting to highlight key architectural features. Modern technology would be seamlessly integrated, ensuring functionality without compromising on elegance. Custom artwork or artifacts reflecting Saudi heritage and history might adorn the walls, while large windows would offer views of the city, fostering a sense of openness.



Private Government VIP Office - Riyadh - KSA



ceiling plan and details
Carbet plan details

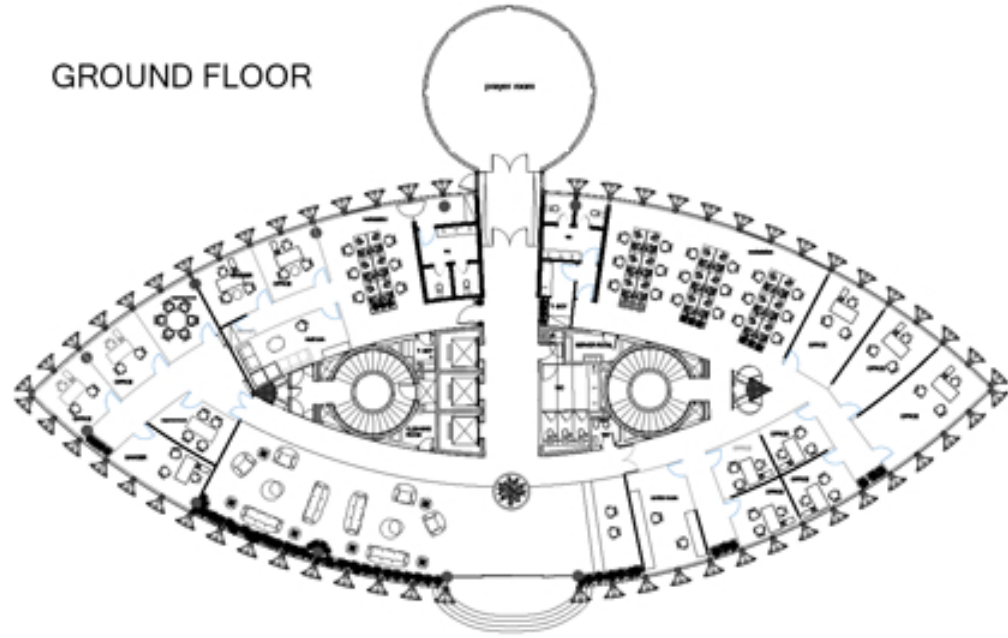


Private Government VIP Meeting room - Riyadh - KSA

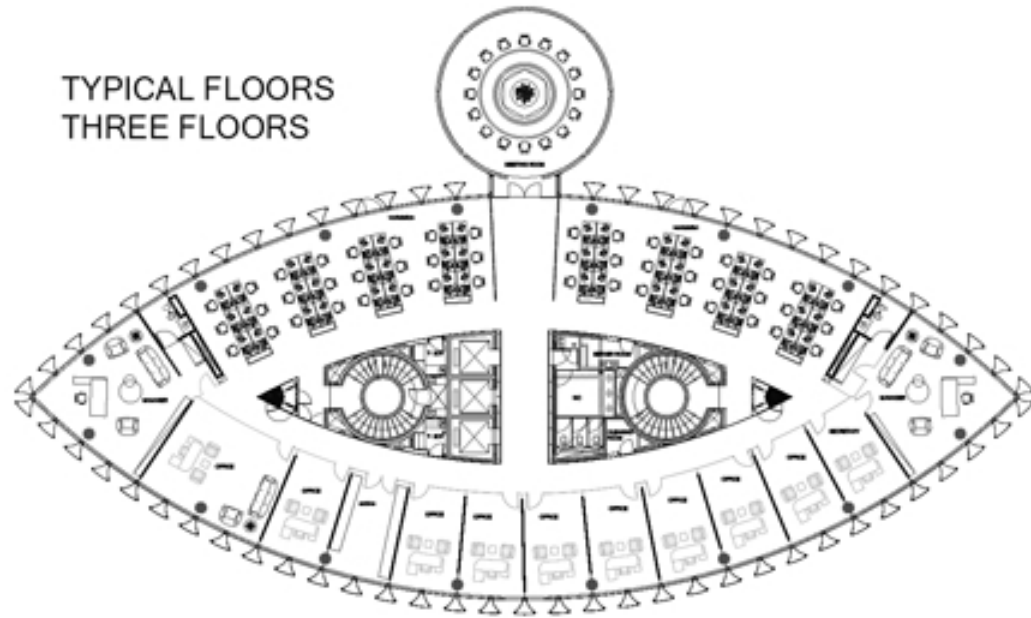


Al Swailem Group (MASCO)

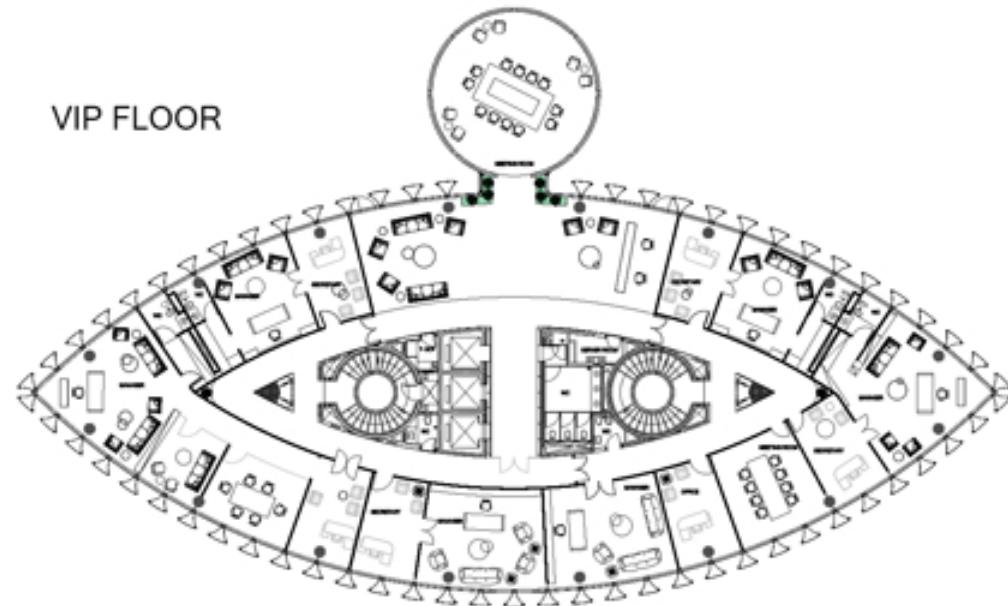
GROUND FLOOR



TYPICAL FLOORS
THREE FLOORS



VIP FLOOR



INTERIOR DESIGN OF AN OFFICE BUILDING

LOCATION : RIYADH - SAUDI ARABIA CLIENT : SWAILEM GROUP

We successfully designed and delivered the interior concept for Al Swailem Group (MASCO) office building, covering a total area of approximately 5,500 sqm.

The ground floor (1,000 sqm) was planned to include a welcoming reception area, waiting zones, dedicated ladies' office space, workshops, private offices, and service areas.

The 2nd to 4th floors (typical floors, 1,000 sqm each) were efficiently designed to accommodate 8 workstations, 10 private offices, management offices, and meeting rooms per floor, ensuring both functionality and productivity.

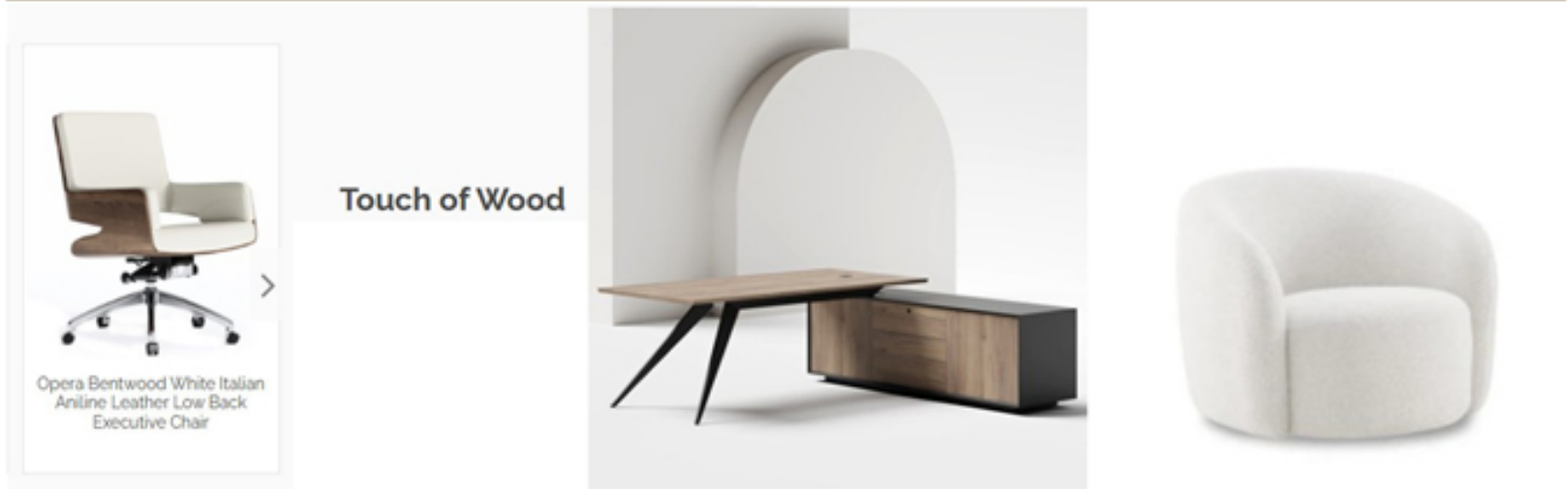
The 5th floor was developed as an exclusive VIP executive level, hosting CEO and chairman offices, top management suites, along with private reception and waiting areas.

The roof level (500 sqm) was designed as a lifestyle extension, featuring a gym, restaurant, relaxation areas, and a dedicated smoking zone.

The entire project was executed in a luxurious and elegant design language, delivered within a short timeframe. All materials and furniture were carefully selected from market-available options, with complete material and furniture selection packages provided to the client.



The entire project was executed in a luxurious and elegant design language, delivered within a short timeframe. All materials and furniture were carefully selected from market-available options, with complete material and furniture selection packages provided to the client.



The 5th floor was developed as an exclusive VIP executive level, hosting CEO and chairman offices, top management suites, along with private reception and waiting areas.



The entire project was executed in a luxurious and elegant design language, delivered within a short timeframe. All materials and furniture were carefully selected from market-available options, with complete material and furniture selection packages provided to the client.

WORKSPACE



The 5th floor was developed as an exclusive VIP executive level, hosting CEO and chairman offices, top management suites, along with private reception and waiting areas.



The entire project was executed in a luxurious and elegant design language, delivered within a short timeframe. All materials and furniture were carefully selected from market-available options, with complete material and furniture selection packages provided to the client.

WORKSPACE



Planter Cabinets

The perfect alternative for traditional storage solutions in office spaces. Combines storage with greenery, bringing a touch of nature into your workspace. These cabinets can also be used as space separators in open offices.



ECO Planter Cabinet White with Lockable Push Open Doors



ECO Planter Cabinet Grey with Lockable Push Open Doors

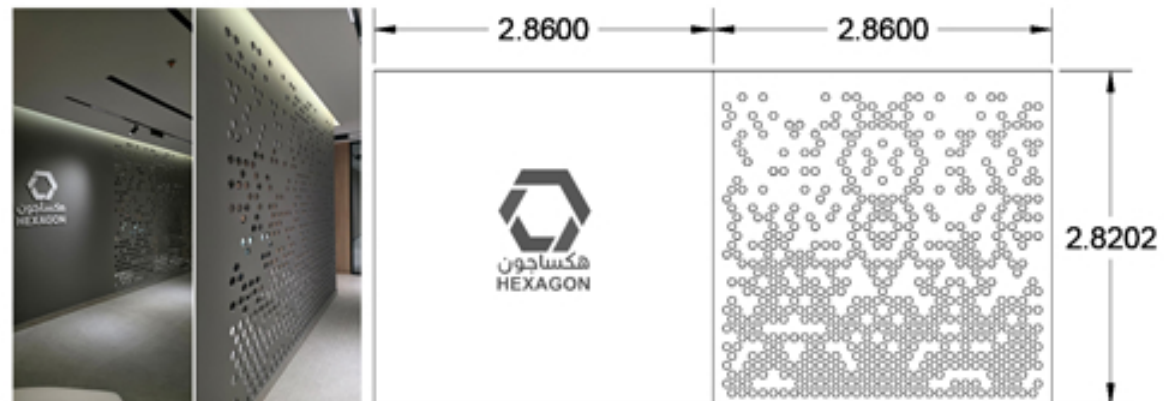
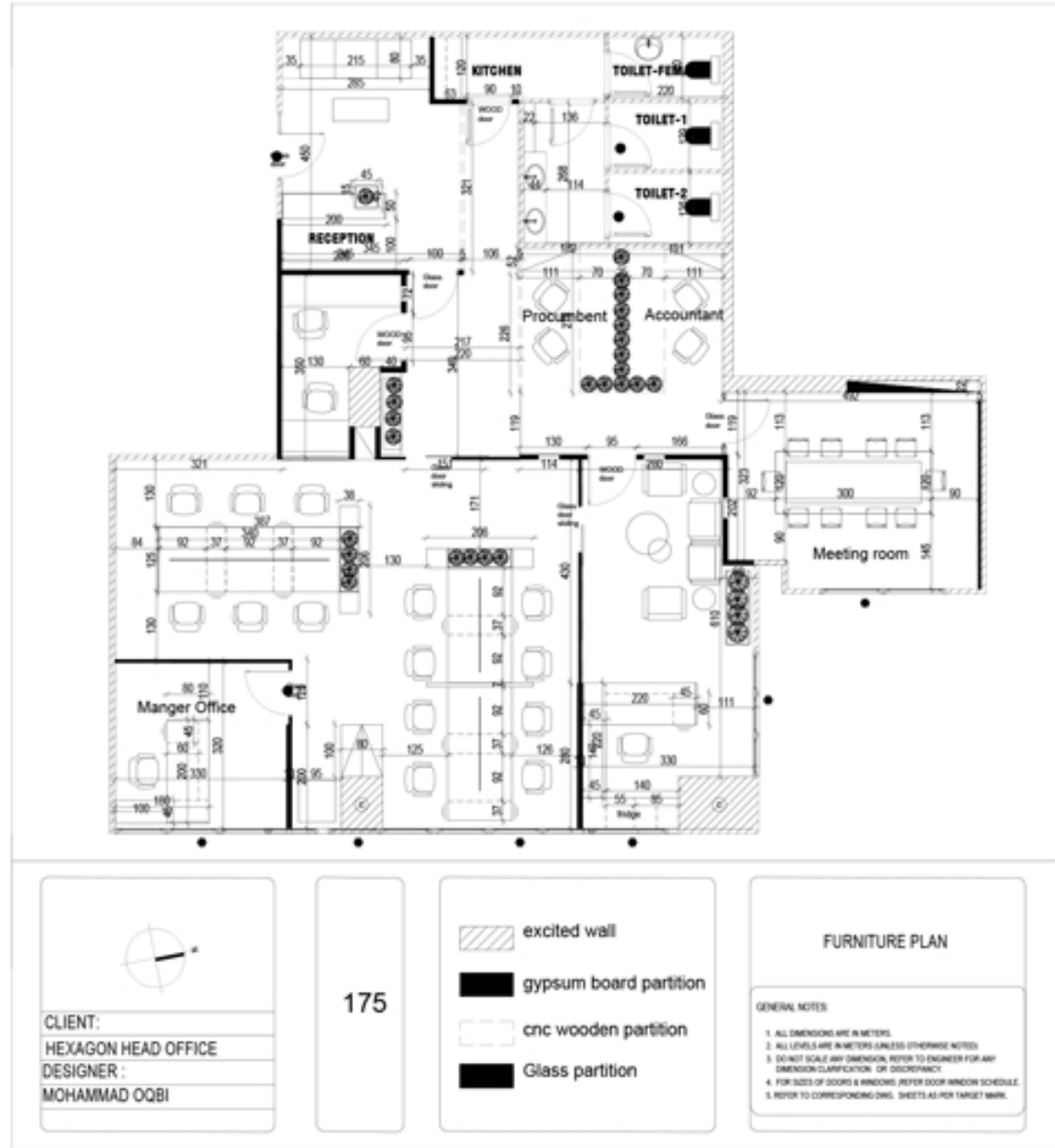
The 5th floor was developed as an exclusive VIP executive level, hosting CEO and chairman offices, top management suites, along with private reception and waiting areas.





HEXAGON CO. HEADOFFICE

Successfully designed and executed the Hexagon Company Head Office in Al Khobar (260 sqm), delivering a striking and sophisticated workspace that embodies a powerful corporate identity through refined modern architecture, intelligent space planning, and premium, high-end finishes.



Project Overview: It's a turnkey project full design and build including architecture , interior , landscap , finishing and construction .The project involves the completion of a modern commercial space spanning 2,700 square meters. The focus is on creating a functional, aesthetically pleasing environment that meets the needs of businesses and their clientele.

● **Design Elements:**

Architectural Style: Emphasizes contemporary design with clean lines, large glass facades, louvers element, with a pure white stone , and open spaces.

Layout: Efficient zoning for various functions (offices, retail, meeting areas , gym , stores) to enhance workflow and accessibility.

Natural Light: Maximizes window placements and open areas to create a bright, welcoming atmosphere.

● **Interior Finishes:**

Materials: High-quality, sustainable materials used for flooring, walls, and fixtures to ensure durability and aesthetic appeal.

Branding: Incorporation of brand elements throughout the interior design to create a cohesive identity.

● **Sustainability Features:**

Energy Efficiency: Implementation of energy-efficient systems, including HVAC, lighting, and potential solar energy solutions.

Green Spaces: Inclusion of indoor plants and an outdoor garden area to promote a healthier environment.





Featuring a touch of walnut veneer wood with Pietra Grey marble-style porcelain and custom white boucle furniture, the design embodies simple elegance with a sophisticated bespoke character. Carefully designed and executed, the space offers a warm, modern, and timeless aesthetic.





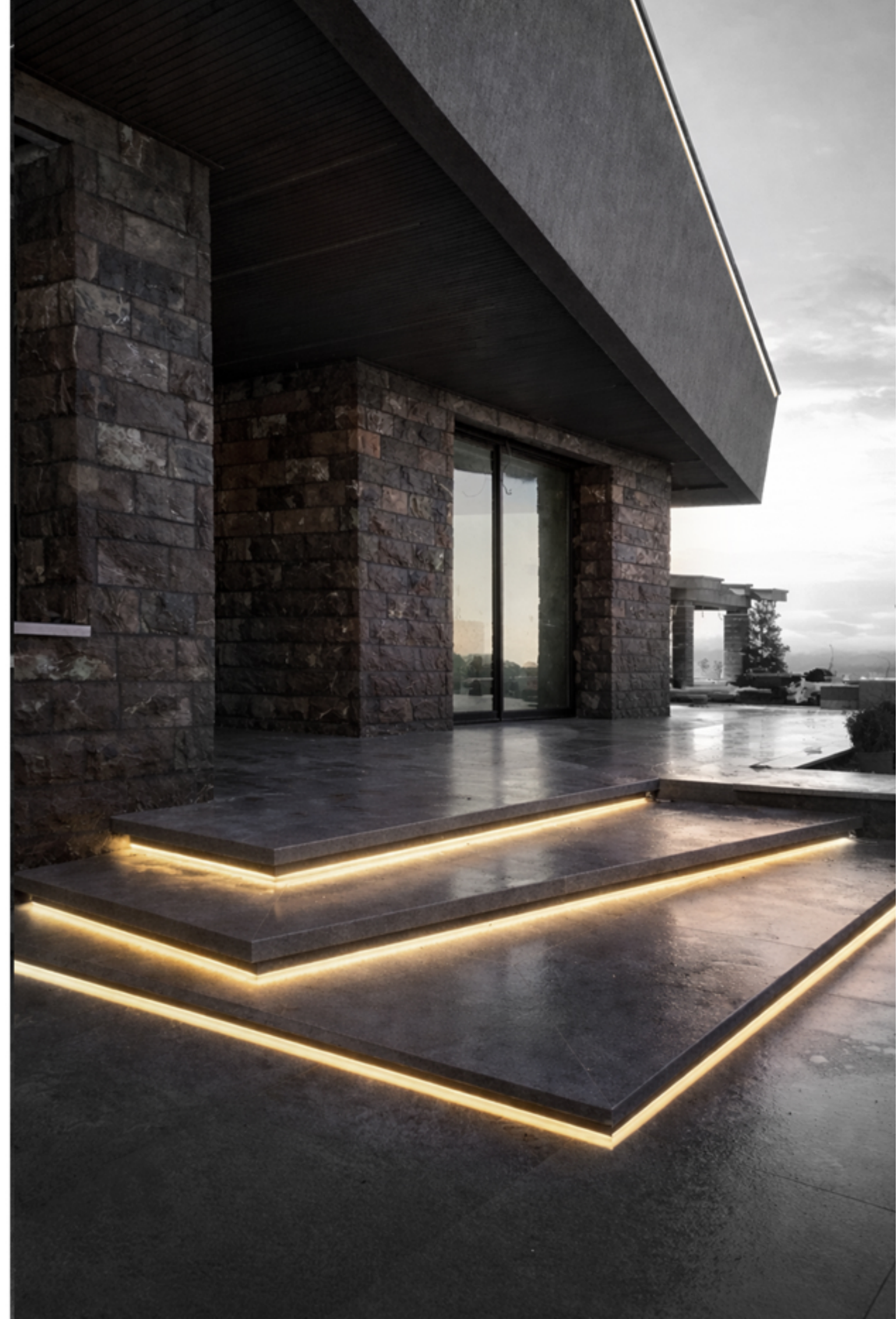
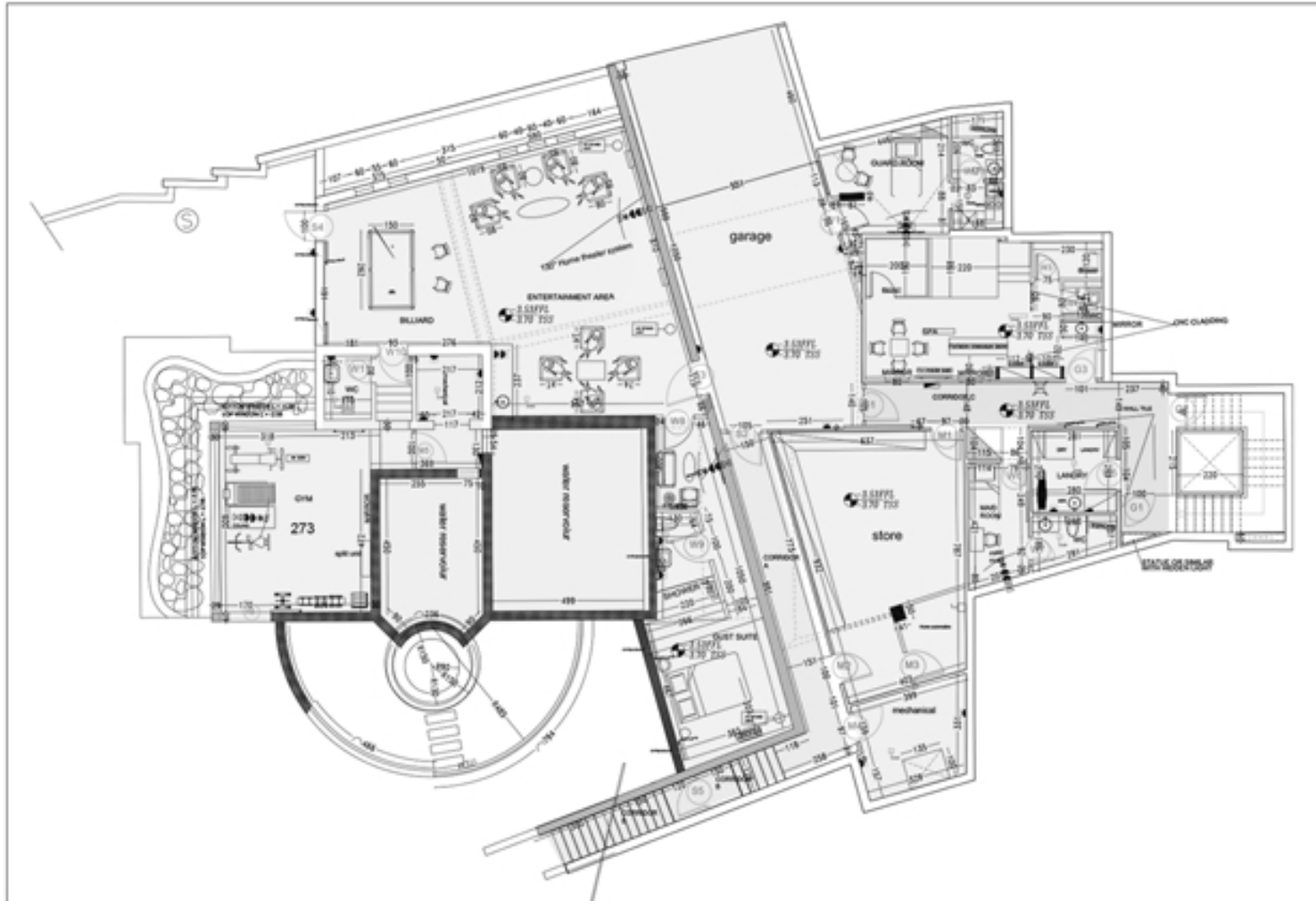
VILLA AD'OR an ultra-modern villa features sleek, minimalist architecture with clean lines and large glass panels that blend seamlessly with the surroundings. The exterior facades utilize a combination of natural stone and smooth concrete, providing a striking contrast while promoting energy efficiency.

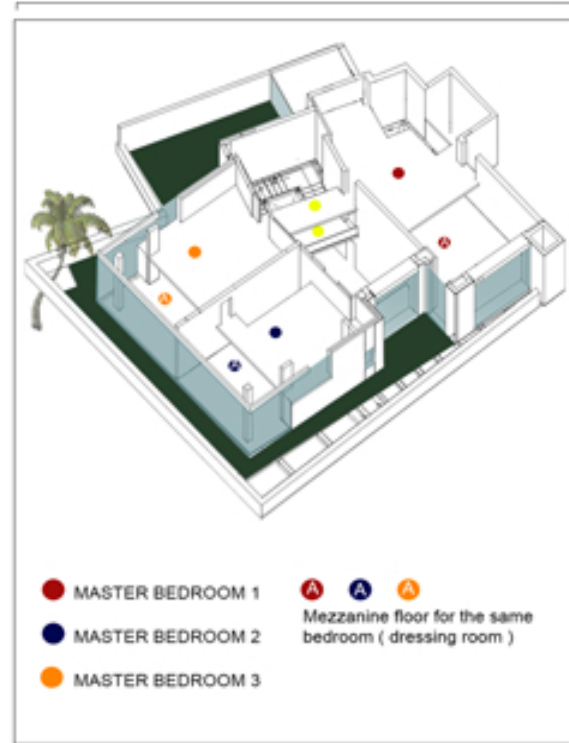
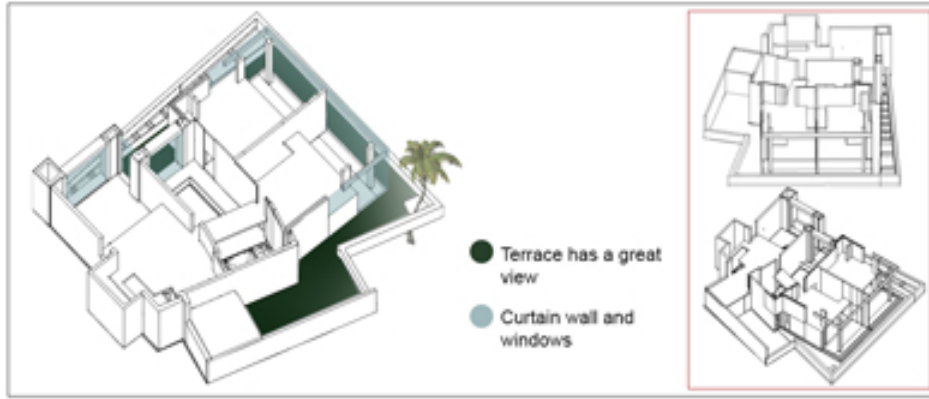
Inside, the design embraces open-concept living spaces filled with natural light. Neutral color palettes are accented by bold art pieces and innovative lighting. The kitchen boasts high-end appliances and a large island, perfect for entertaining. Each bedroom includes 2 floors with nice double volume first floor include office, sleeping area en-suite bathrooms, and the second floor includes changing room emphasizing luxury and privacy .

The landscape design complements the villa's modern aesthetic, featuring manicured gardens with native plants, outdoor seating areas, and a striking infinity swimming pool that appears to merge with the horizon. The overall design harmonizes luxury, comfort, and sustainability, creating an idyllic retreat.

The villa consists of a basement floor, which includes a entertainment room and an internal garage with a guard room and a maid's room, a huge storeroom and a spa and gym.

The ground floor consists of a main kitchen and a service kitchen. Guest bathrooms, two dining rooms and open seating areas.

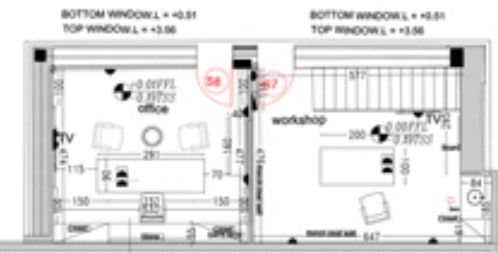




Ground	
Open area includes bar, guest, dining and living	145 sqm
Main kitchen	45 sqm
Dirty kitchen and pantry	17 sqm
Guest bathroom	25 sqm
Small skylight garden	6 sqm
Fist and mezz	
Master bedroom 1	140 sqm
Master bedroom 2	85 sqm
Master bedroom 3	86 sqm
Bridges	30 sqm
Roof	
Roof	70 sqm
Private building	
Main vip office	35 sqm
Workshop	35 sqm
Case Stairs	100 sqm

- Basement 558 sqm
- Ground Floor 275 sqm
- First Floor 355 sqm
- Mezzanine 155 sqm
- Roof 100 sqm
- Private building 81 sqm

Water reservoir	55 sqm
Corridors basement	60 sqm
Master guest bedroom	36 sqm
Maid room and laundry	24 sqm
Store	50 sqm
Basement	
Garage	72 sqm
Gard room	22 sqm
SPA	38 sqm
Mech rooms	22 sqm
Entertainment area	95 sqm
Gym	38 sqm



WORK SHOP AND OFFICE DATA
 APPROX. ELEVATION 365 CM

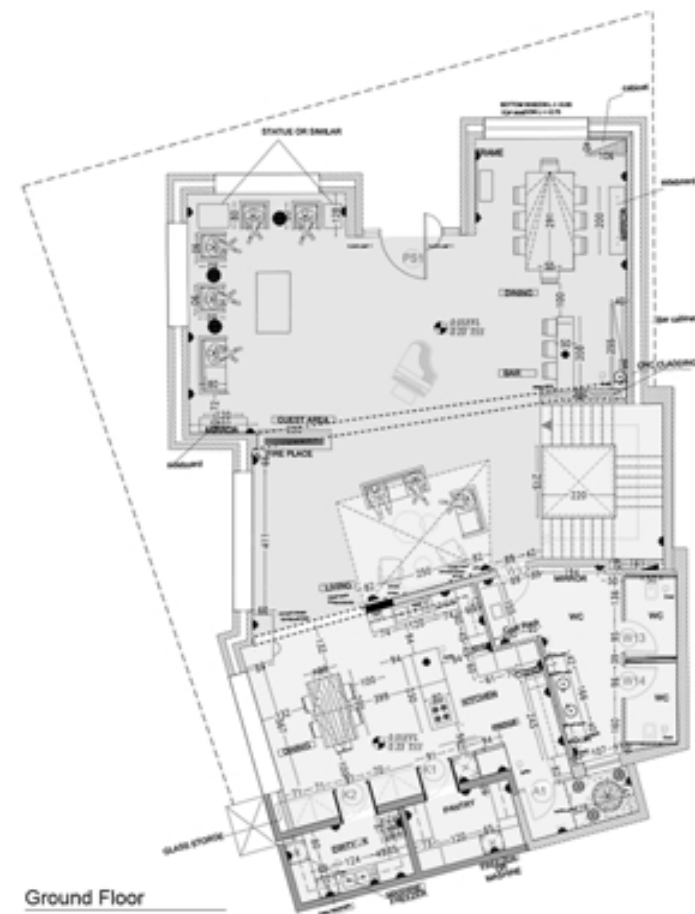
S.S.L = +0.19
 TOP GATE L = +2.42
 BOTTOM SLAB L = +4.00
 APPROX. ELEVATION 365 CM

As you can notice, attention has been paid to smallest details of the villa, using every piece and every material in its appropriate place.

The villa has been designed with passion and love, so every detail has been executed with utmost professionalism.

The first floor and mezzanine consist of the bedrooms and dressing rooms. They are connected by sky bridges. The roof floor consists of a winter living room with a kitchen and outdoor Garden.

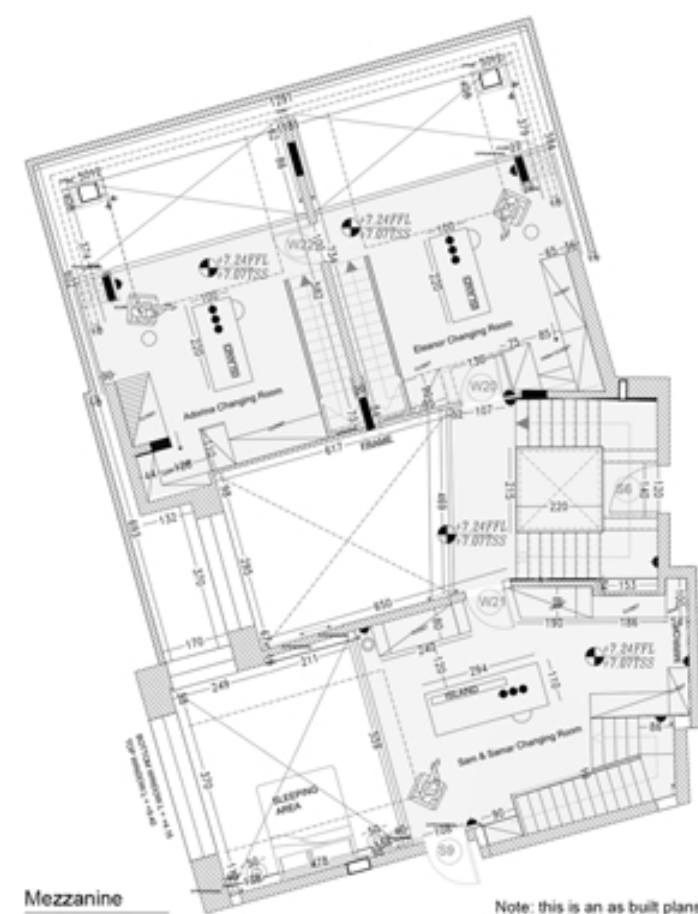
The separate building consists of a private workshop and a private office for the villa owner.



Ground Floor

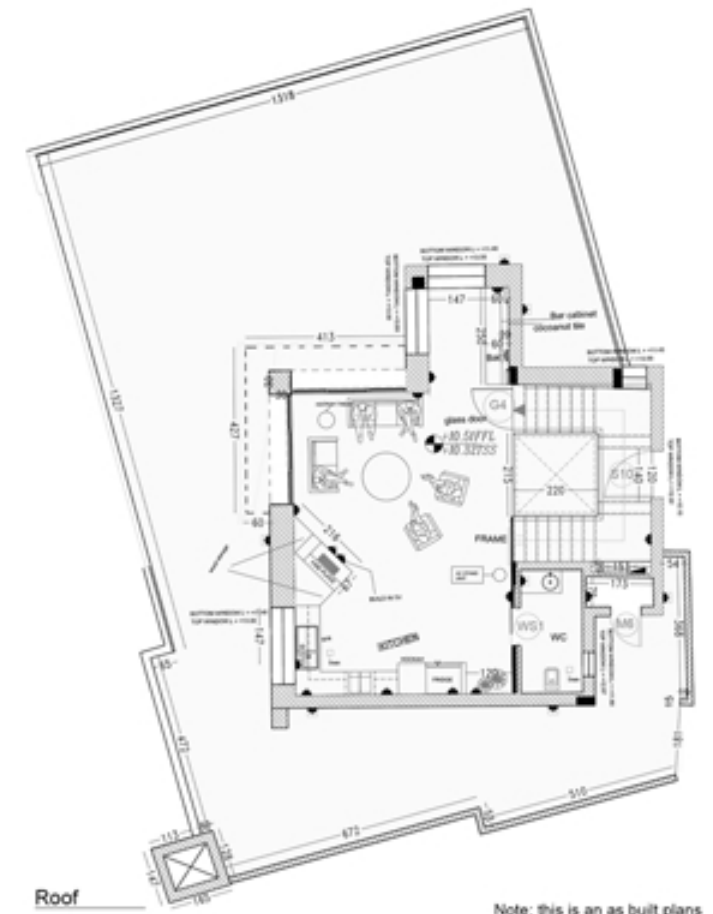


First Floor



Mezzanine

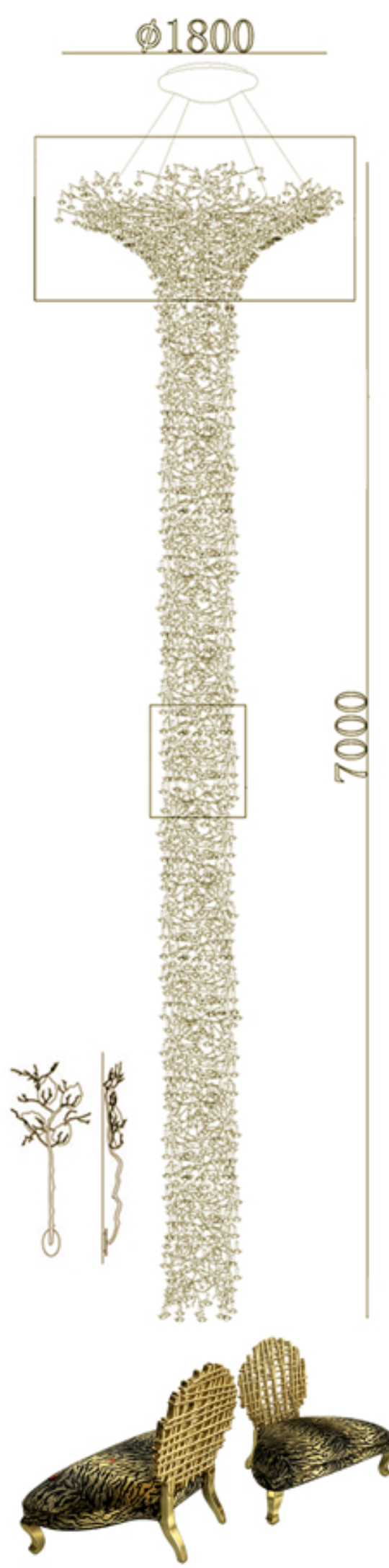
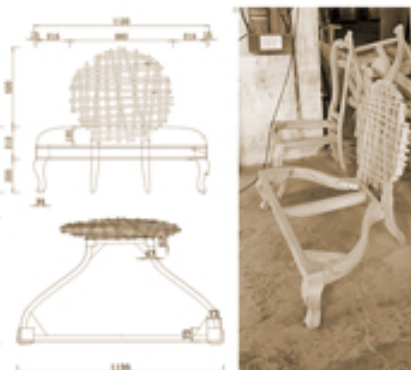
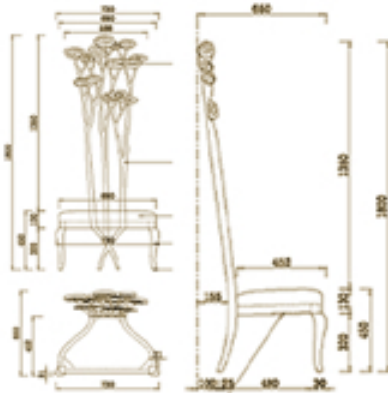
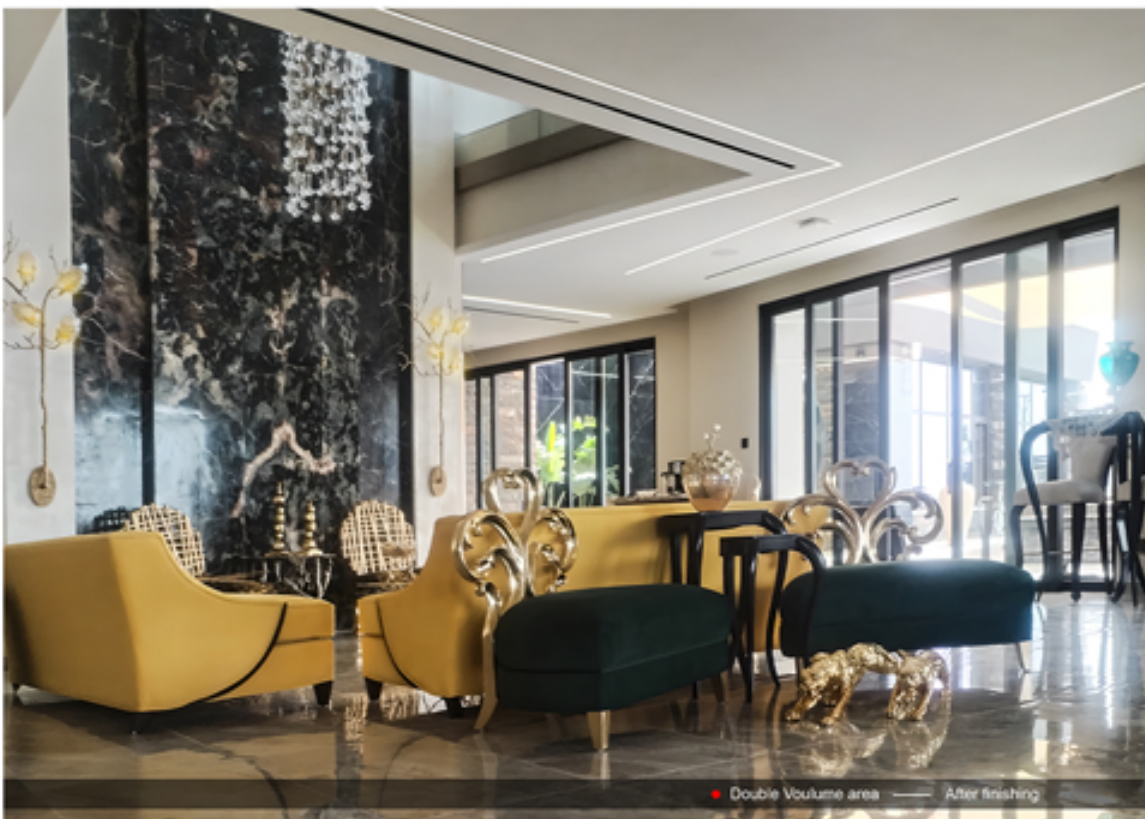
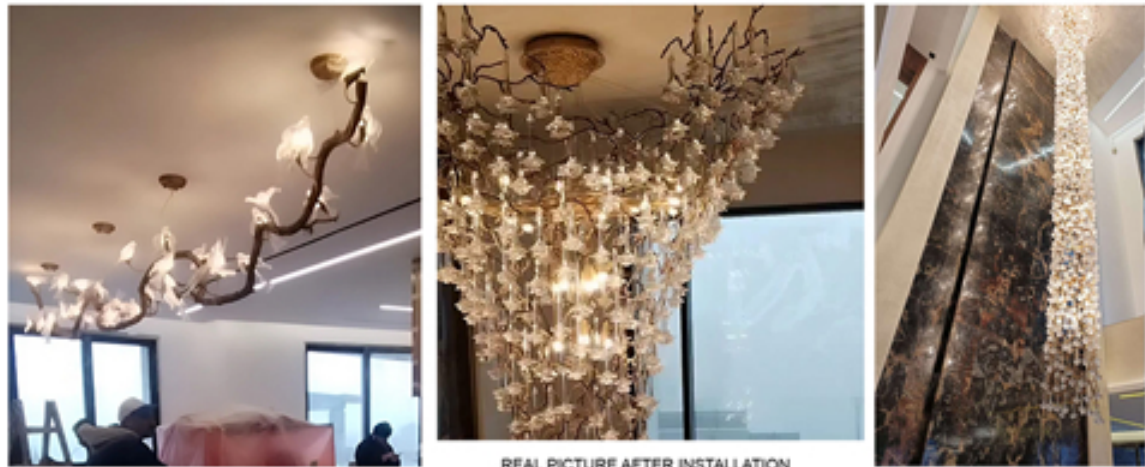
Note: this is an as built plans



Roof

Note: this is an as built plans





VILLA AD'OR



We designed this villa interior with a refined, high-end vision that reflects true luxury living, carefully selecting premium materials and finishes to create a timeless and elegant atmosphere. Every detail was crafted to deliver a sophisticated experience, complemented by the use of world-class furniture from one of the most prestigious luxury brands, Christopher Guy.

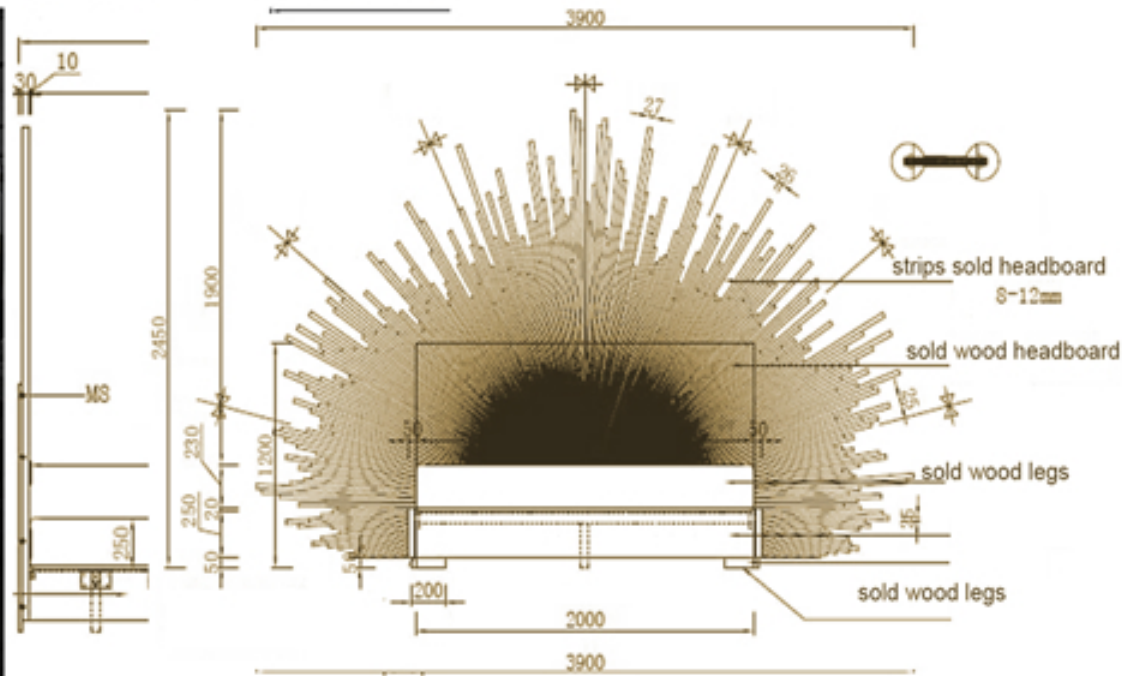
CG

CHRISTOPHER GUY

Christopher Guy is globally recognized for its iconic, elegant designs that blend classic European influence with contemporary luxury. The brand is famous for its sculptural forms, signature silhouettes, and exceptional craftsmanship. Each piece is handcrafted with meticulous attention to detail, using the finest materials to achieve a distinctive, sophisticated look.

What makes Christopher Guy unique is its ability to create statement furniture—pieces that are not just functional, but artistic focal points within a space. From its flowing chaise lounges to its refined dining sets and bespoke detailing, the brand adds a sense of glamour and exclusivity to any interior.

In this villa, incorporating Christopher Guy elevated the overall design, transforming the space into a truly luxurious, cohesive environment that reflects prestige, elegance, and timeless beauty.



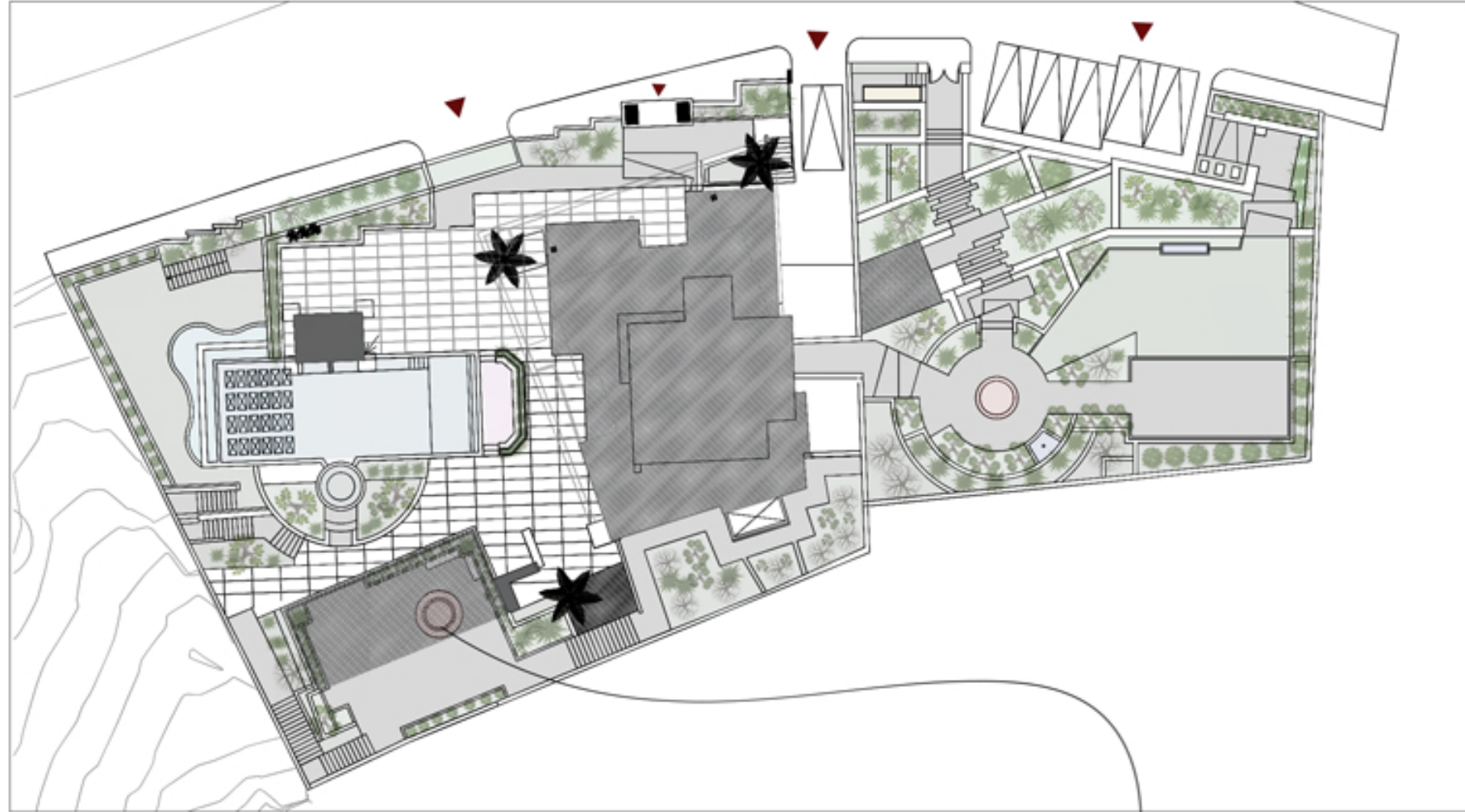
Guest room - After finishing

VILLA AD'OR

It was a great opportunity for Landscape design and supervision for a unique ultra-modern villa focus on creating an aesthetically pleasing and functional outdoor space that complements the villa's architecture. Key components include:

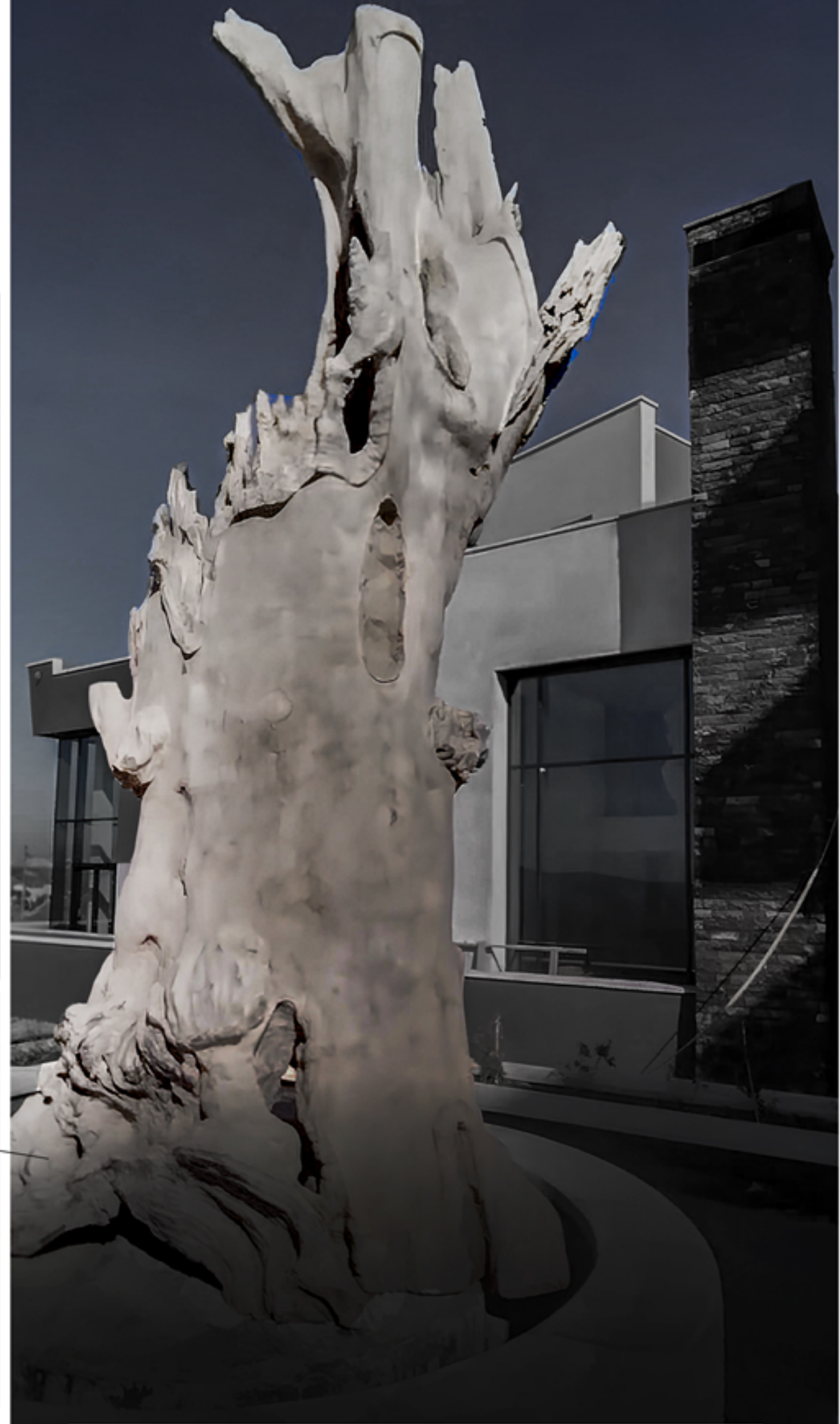
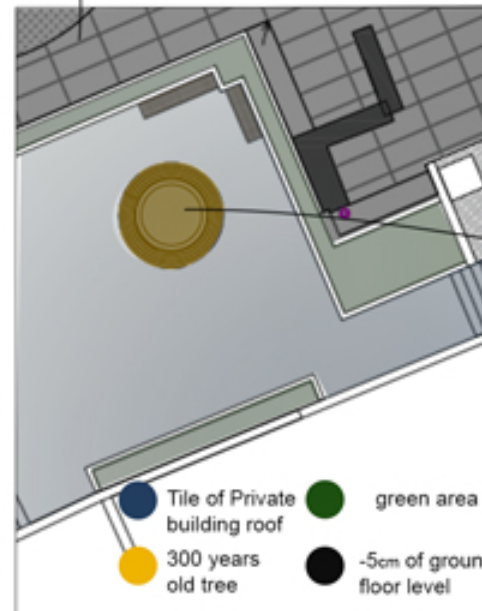
- Concept Development:** Crafting a design that integrates modern materials and forms, emphasizing clean lines and minimalism.
- Plant Selection:** Choosing a diverse palette of native and contemporary plants that enhance the villa's modern style while ensuring low maintenance.
- Hardscape Elements:** Incorporating pathways, patios, and water features that reflect a sleek, modern aesthetic.
- Lighting Design:** Implementing ambient and accent lighting to highlight key features and create a welcoming atmosphere.
- Supervision:** Overseeing the installation process to ensure quality and adherence to design specifications, addressing any challenges that arise.
- Final Touches:** Completing the project with furniture placement, decorative elements, and landscaping maintenance plans to ensure long-term sustainability and visual appeal.

That was comprehensive leads to ensures the landscape, unique experience and harmony with the building



- Keys :
- ▼ Entrance
 - Fire pit
 - Green areas
 - Water fetures
 - Buildings
 - 300 + years trees
 - Generator

LIGHTING TABLE		
SYMBOL	DESCRIPTION	QUANTITY
□	FRONT LIGHT	25
□	BOLLARD	4
○	CAT'S EYE	32
○	HIDDEN LIGHT	50
○	LIGHTING POLE	4
○	CEILING MOUNTED SPOT LIGHT	7
○	SOCKET	3
○	UP LIGHT	7
○	WALL MOUNTED SPOT LIGHT	1



VILLA AD'OR



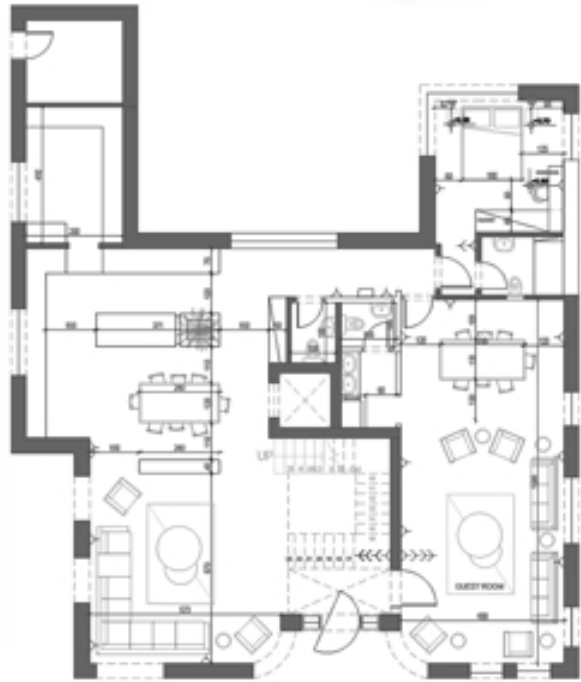
VERTIX

We designed a 500 sqm luxury new classic villa, blending timeless elegance with refined architectural detailing and a balanced spatial layout. The project reflects a high-end living experience, where proportions, symmetry, and classical elements are carefully integrated with modern functionality.

Our scope included full interior design, along with complete furniture selection and material specification. Every element—from finishes and textures to bespoke furniture pieces—was curated to achieve a cohesive, sophisticated aesthetic, ensuring both visual harmony and premium quality throughout the villa.

The result is a distinctive, elegant residence that embodies luxury, comfort, and meticulous attention to detail.





Materials & Finishes

Wall Treatment:

The main feature wall uses 3D sculptural panels with a flowing organic pattern, resembling carved stone or gypsum with a marble-inspired finish. This adds depth and a strong artistic focal point.

Secondary Walls:

Finished with classic panel moldings in a soft off-white tone, enhancing the modern-classic identity.

Flooring:

Likely large-format porcelain or marble-look tiles, combined with a soft textured rug to introduce warmth and comfort.

Furniture Materials:

Sofas: Bouclé or velvet fabric in creamy beige tones

Tables: Natural walnut wood with smooth organic shapes

Accessories: Dark accents (black trays, décor pieces) for contrast

Lighting Design

Indirect LED Lighting:

Integrated vertical and hidden LED strips emphasize the wall panels and architectural lines, creating a soft ambient glow.

Chandelier Feature:

A statement chandelier with organic branching structure and crystal drops, acting as a sculptural centerpiece and adding luxury sparkle.

Layered Lighting Approach:

Combination of ambient, accent, and decorative lighting enhances depth and highlights materials.

Color Palette : Dominant tones: Warm beige, ivory, and cream

Accent tones: Walnut brown, muted green

Contrast elements: Black accessories

This palette creates a calm, elegant, and timeless atmosphere suitable for high-end villas and palaces.





A luxury modern bedroom designed with a calm, soft aesthetic and warm ambient lighting. The space features curved architectural elements, integrated LED lighting, and a seamless flow between sleeping, dressing, and wardrobe areas.

Materials include fabric upholstered bed, wood veneer panels, and light porcelain/marble flooring, all in a neutral beige palette. The open wardrobe with warm lighting adds functionality and elegance.

Overall, the design creates a cozy, refined, and high-end atmosphere ideal for modern villas.

Design Language

Soft & Curved Geometry:

Furniture and tables use rounded edges, creating a smooth and inviting flow.

Modern Classic Style:

A balance between classical wall detailing and contemporary minimal furniture.

Luxury Detailing:

Focus on craftsmanship, textures, and subtle lighting rather than excessive ornamentation.

Overall Concept

The space is designed as a luxury reception/living area, where comfort meets elegance. It reflects a VIP-level design approach, emphasizing:

Artistic walls

Premium materials

Soft lighting atmosphere

High-end furniture selection





We designed a 350 sqm landscape project that combines functionality, aesthetics, and a refined outdoor living experience. The design focuses on creating a harmonious flow between softscape and hardscape elements, delivering a balanced and elegant environment.

Our scope included complete outdoor furniture selection and material specification, ensuring durability, comfort, and visual consistency. Carefully chosen materials, textures, and finishes were integrated with tailored furniture pieces to enhance the overall atmosphere and usability of the space.

The result is a cohesive, high-quality landscape design that offers both relaxation and visual appeal, reflecting a modern and sophisticated outdoor lifestyle.



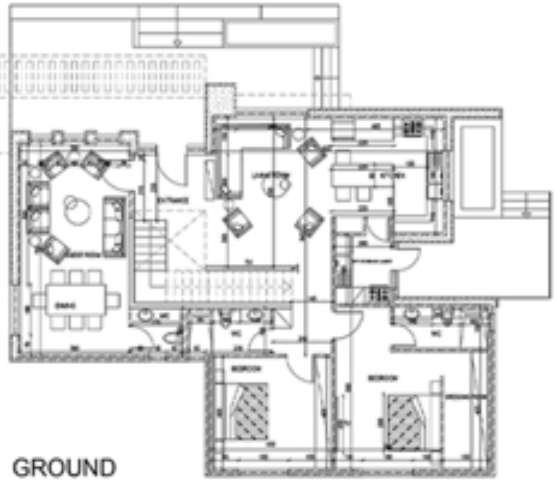
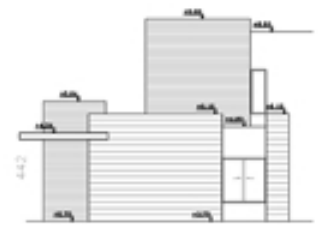


S HOUSE

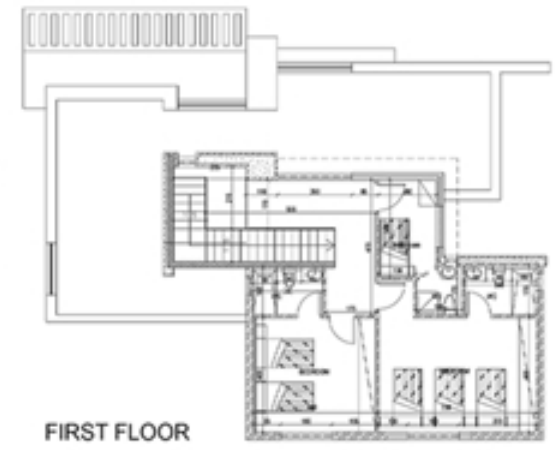
The project presents a 300 sqm luxury modern farmhouse, thoughtfully designed to embody a refined balance between contemporary architecture and natural materials. The exterior composition integrates premium stone cladding with smooth painted finishes, creating a timeless facade that reflects strength, elegance, and contextual harmony.

Internally, the design adopts a modern, minimalist language, characterized by clean geometries, open-plan spatial organization, and a carefully curated palette of high-quality materials. The interior spaces are crafted to enhance natural light, spatial flow, and visual continuity, resulting in an atmosphere that is both sophisticated and inviting.

Overall, the design emphasizes luxury, functionality, and architectural clarity, delivering a cohesive living environment that seamlessly merges modern lifestyle requirements with a serene, nature-inspired setting.



GROUND



FIRST FLOOR

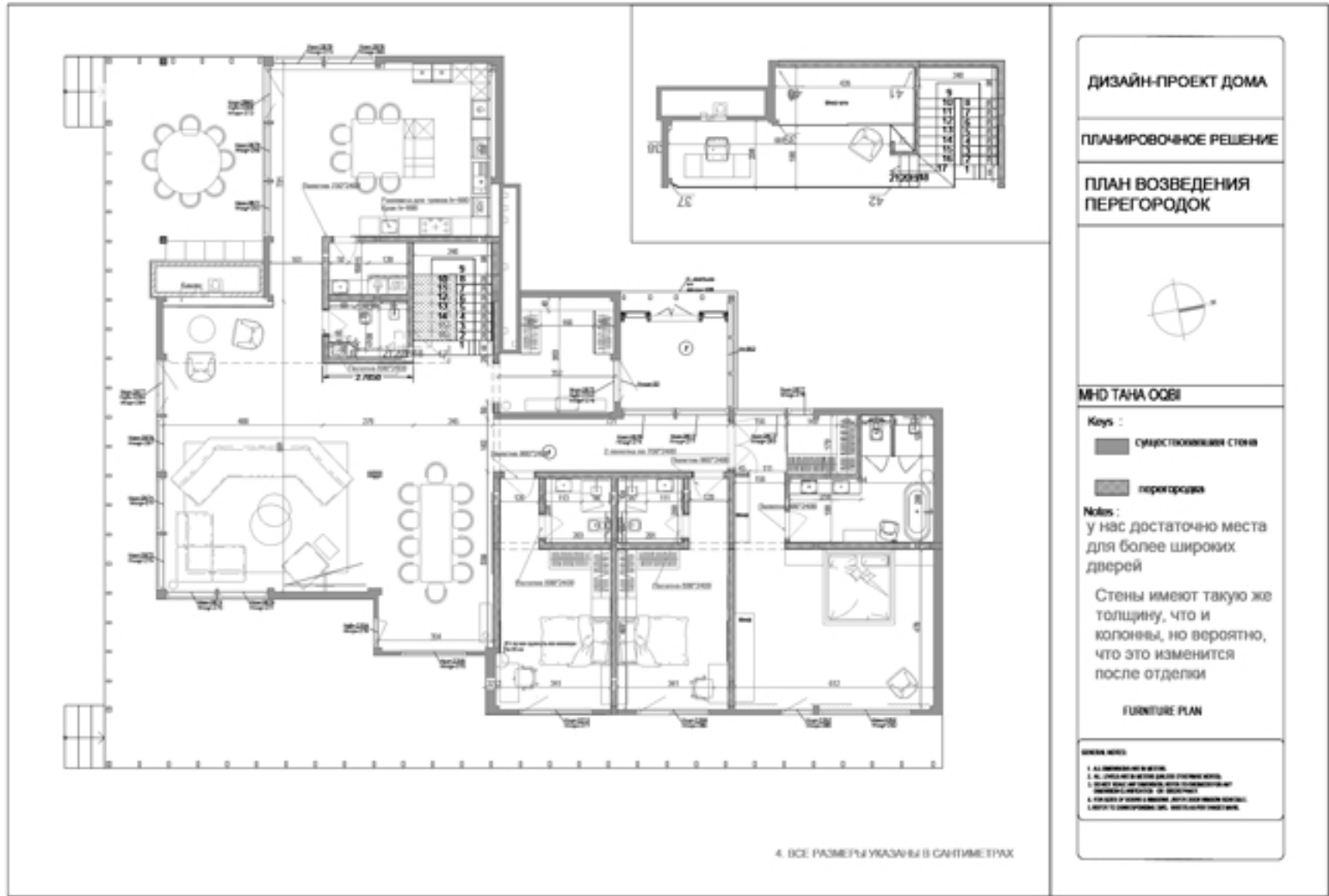


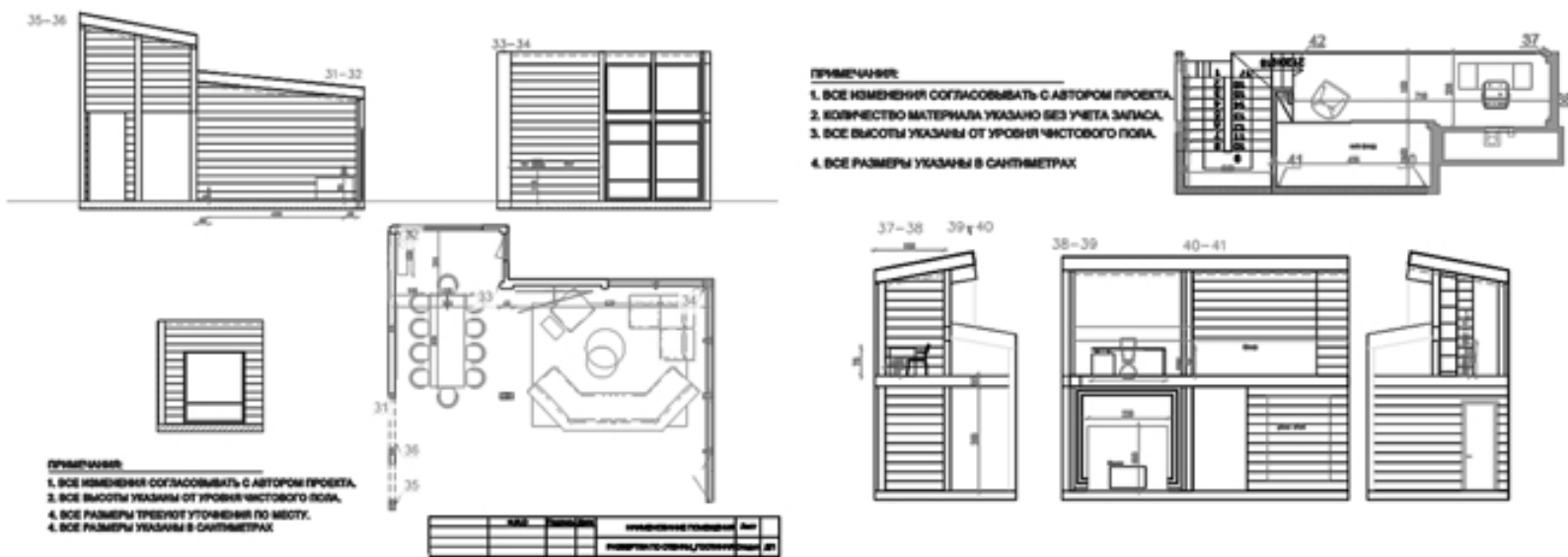
This villa, located in **Saint Petersburg, Russia**, is designed as a refined timber-structured residence that responds to the region's cold climate and natural surroundings. The architectural concept focuses on creating a warm, insulated, and visually connected living environment, where large panoramic windows frame the snowy landscape while maintaining interior comfort.

The double-height living space enhances openness and allows natural light to penetrate deeply, contrasting beautifully with the rich natural wood finishes. The material palette combines timber, soft textiles, and subtle stone elements, achieving a balance between modern luxury and the cozy character typical of northern architecture.

The interior design emphasizes minimalist elegance with organic forms, with elegant furniture and carefully curated lighting, including sculptural pendant fixtures that add identity and warmth. The overall design delivers a high-end chalet-inspired living experience, tailored to the lifestyle and climatic context of Saint Petersburg, blending sophistication with a strong sense of place.





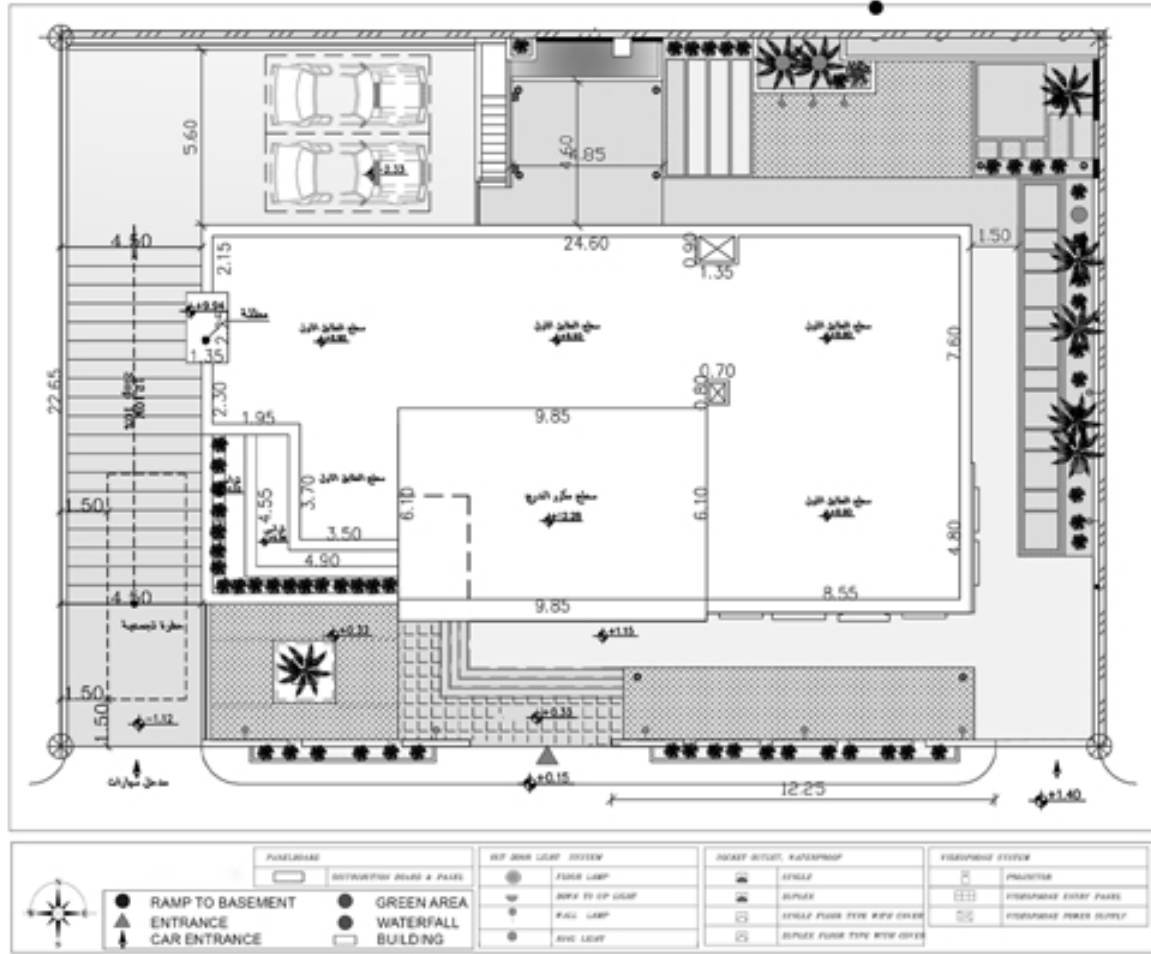




an **NEW CLASSIC** villa Reflects the customer's personality , the villa 920 sqm of area we have done design and finishing . villa architecture with clean lines and large glass panels that blend seamlessly with the surroundings. The exterior facades utilize a combination of natural stone, arabesque, Stone cornice and arcs , providing a striking contrast while promoting energy efficiency.

Inside, the design embraces open-concept living spaces filled with natural light. Neutral color palettes are accented by bold art pieces and innovative lighting. The kitchen boasts high-end appliances and a large island, perfect for entertaining. Each bedroom includes sleeping area en-suite bathrooms, emphasizing luxury and privacy .

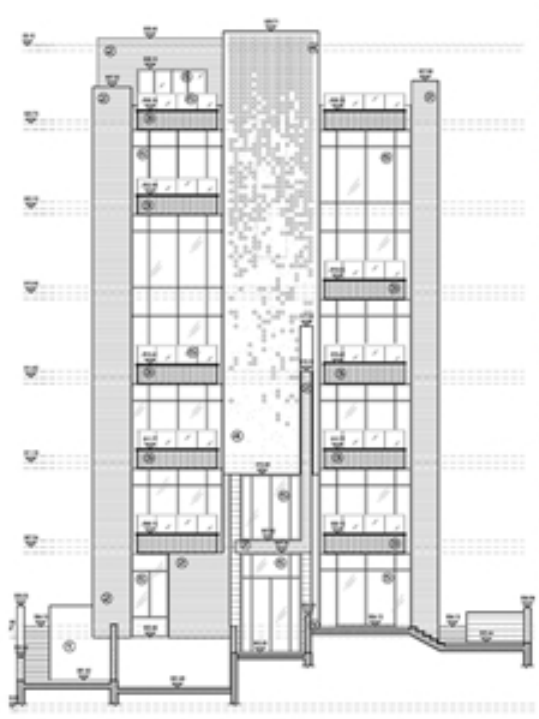
The landscape design complements the villa's modern aesthetic, featuring manicured gardens with native plants, outdoor seating areas, and a striking indoor swimming pool, The overall design harmonizes luxury, comfort, and sustainability, creating an idyllic retreat



Swiss Residential

Full design for a residential building with an area of 2,825 square meters and features a modern design that combines elegance with functionality. It comprises five spacious duplex apartments and five single apartments, catering to diverse living needs. The striking large glass façade not only enhances the building's aesthetic appeal but also allows for abundant natural light, creating bright and inviting interiors. Complementing the contemporary design, natural stone accents add a touch of warmth and sophistication. This harmonious blend of materials promotes a sense of luxury while ensuring a welcoming atmosphere for residents. The building's layout and features foster a vibrant community, making it an ideal living space.

TOTAL AREAS				
NO.	FLOOR	TOTAL AREA Without Balconies	Balconies Area	TOTAL AREA
01	1ST BASEMENT FLOOR AREA	+373.18m ²	-----	+373.18m ²
02	GROUND FLOOR AREA	+373.00m ²	+10.34m ²	+383.34m ²
03	1ST FLOOR AREA	+372.92m ²	+10.34m ²	+383.26m ²
04	2ND FLOOR AREA	+372.92m ²	+10.34m ²	+383.26m ²
05	3RD FLOOR AREA	+365.38m ²	+5.17m ²	+370.55m ²
06	4TH FLOOR AREA	+365.38m ²	+5.17m ²	+370.55m ²
07	5TH FLOOR AREA	+372.92m ²	+10.34m ²	+383.26m ²
06	STAIRCASE FLOOR AREA (مناطق السلج)	+74.52m ²	-----	+74.52m ²
07	ARCHITECTURAL PROJECTION AREA	+63.24m ²	-----	+63.24m ²
08	ENTRANCE CANOPY AREA	+6.00m ²	-----	+6.00m ²
09	STAIRCASE AREA	+34.00m ²	-----	+34.00m ²
TOTAL		2773.46m²	51.70m²	2825.16m²



Luxury Small Chalet Design Overview

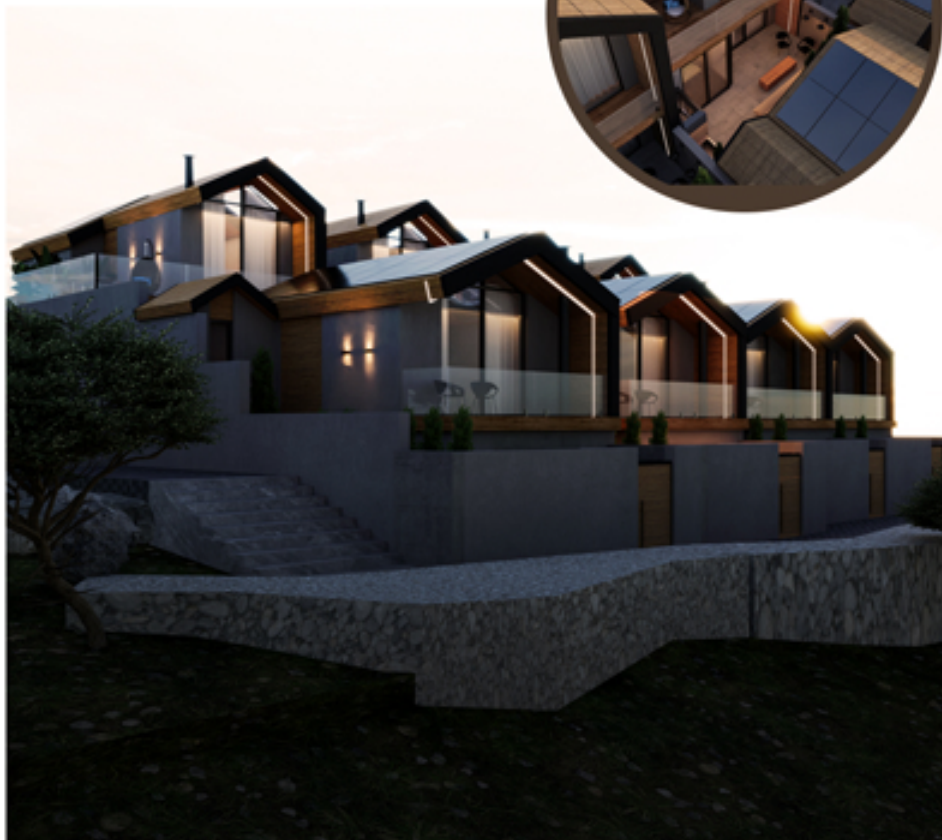
This project features a beautifully designed set of eight chalets, divided into two distinct types, each offering a unique experience with stunning amenities and thoughtful layouts.

1. First Type (4 Chalets - 80m² Each)

- Total build area: 80m²
- Key features:
 - Private pool
 - Amazing landscaping (42m²)
 - Cozy fireplace
 - Bedroom
 - Living area & kitchen

2. Second Type (4 Chalets - 92m² Each, Two Floors)

- Total build area: 92m²
- Key features:
 - Jacuzzi with breathtaking balcony views
 - Two floors for enhanced space and privacy
 - Two bathrooms
 - Kitchen & living area
 - Cozy fireplace
 - Bedroom
 - Landscaped area (30m²)



Farm house Mr. Nsour is a modern farm house features sleek minimalist architecture with clean lines and large glass panels that blend seamlessly with the surroundings. The exterior facades utilize a combination of natural stone and smooth concrete, providing a striking contrast while promoting energy efficiency. with 380 sqm of building area that includes living rooms , kitchen , entertainment room, and 3 bedrooms - more than 4000 sqm of landscaping and fasilities ,

The landscape design complements the House's modern aesthetic, featuring manicured gardens with native plants, outdoor seating areas, and a striking infinity swimming pool that appears to merge with the horizon. The overall design harmonizes luxury, organic, comfort, and sustainability, creating an idyllic retreat.



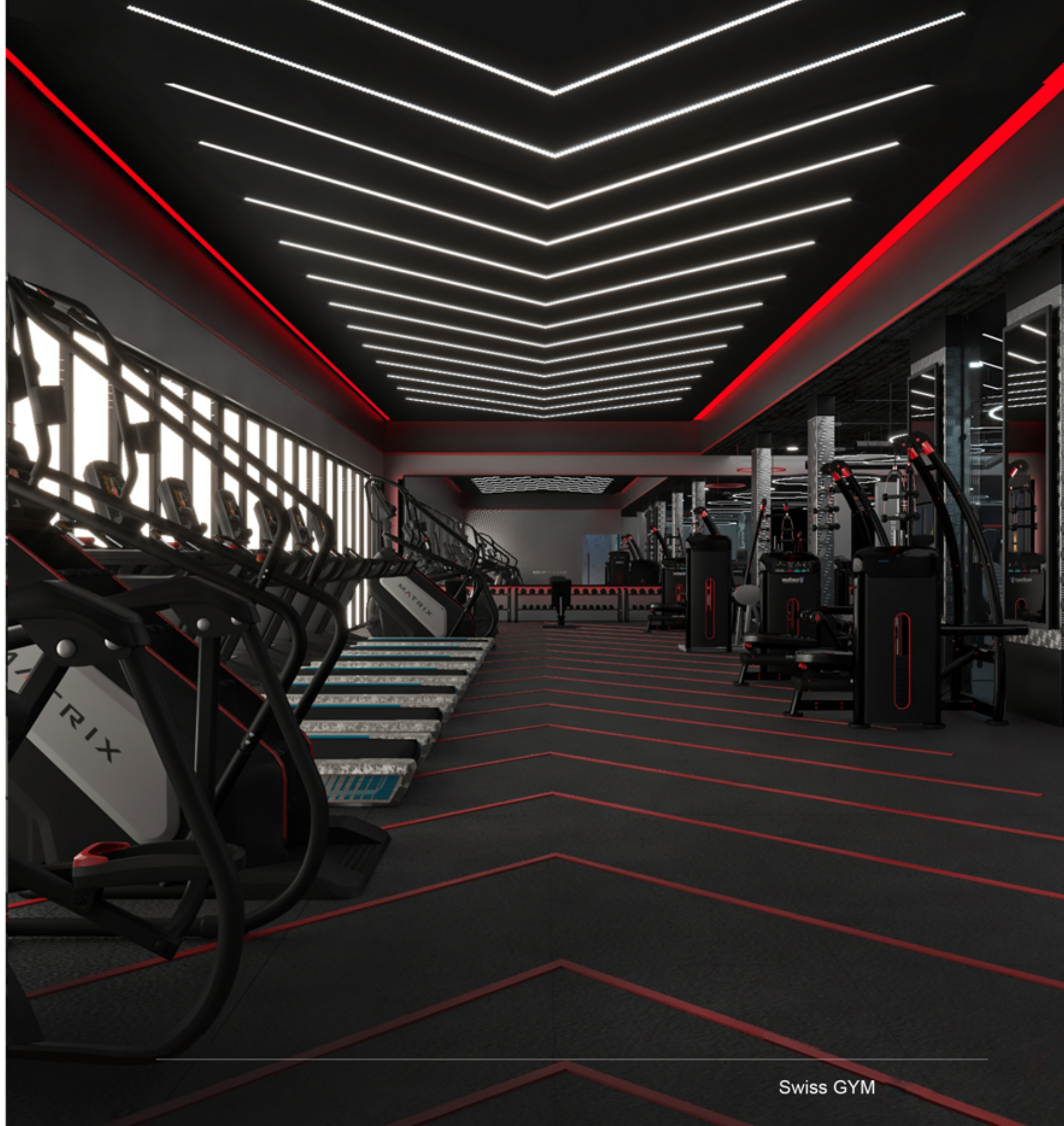
280 sqm of building area that includes living rooms , kitchen , Guest room , and 3 Master bedrooms - within 800 sqm of landscaping and facilities , minimalist architecture with clean lines and large glass panels that blend seamlessly with the surroundings. The exterior facades utilize a combination of natural stone and smooth concrete, providing a striking contrast like an organic house language.

The landscape design complements the House's modern aesthetic, featuring manicured gardens with native plants, outdoor seating areas, and a striking swimming pool that appears to merge with the horizon. The overall design harmonizes organic, comfort, and sustainability.



SWISS GYM PROJECT

This 620-square-meter gym features a modern design with a spacious layout. It includes a well-equipped workout area, a jacuzzi for relaxation, a runway for walking or light running, a cozy cafeteria, and a sauna for ultimate comfort and wellness. The design is sleek, functional, and focused on enhancing the overall fitness and relaxation experience.



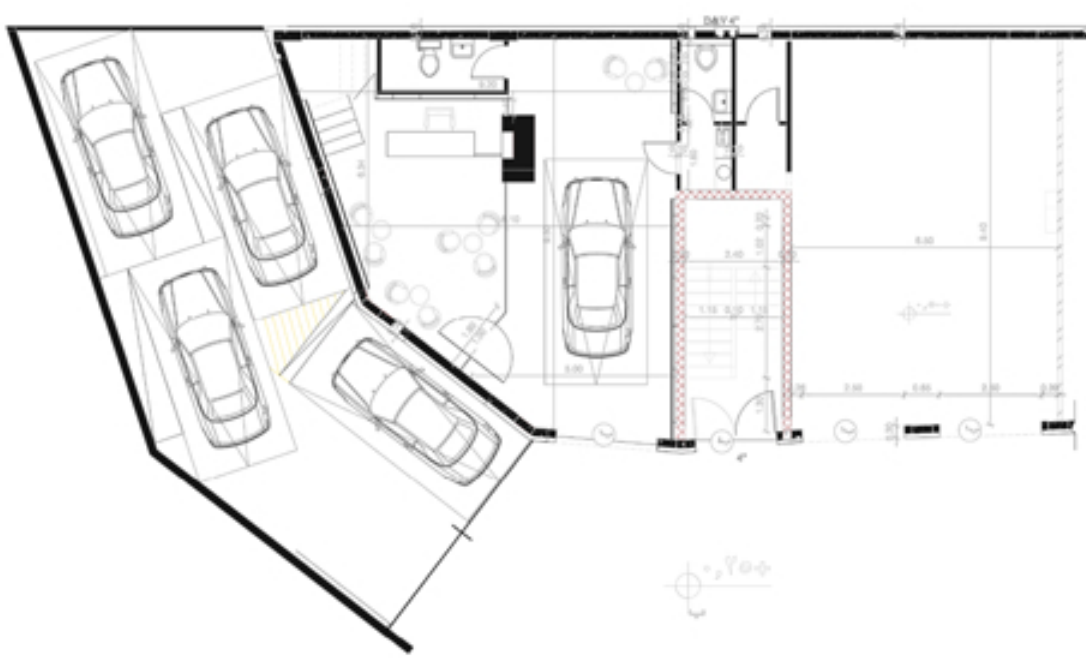
AD'OR AUTO CAR SERVICE

We proudly designed and executed this modern automotive service space for Ador Auto - Express Car Services, delivering a bold and highly functional environment that reflects speed, precision, and innovation.

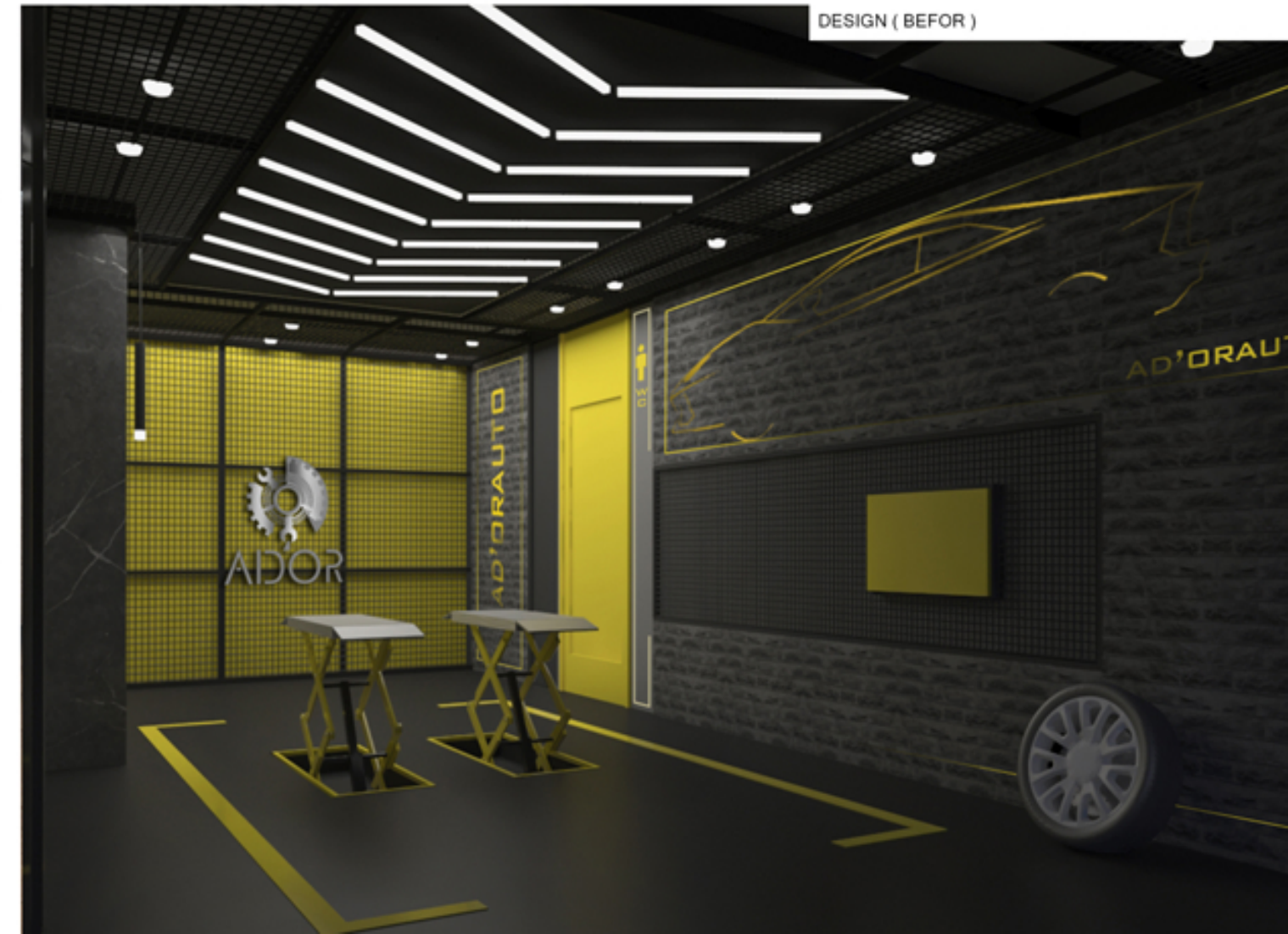
The concept is inspired by an industrial-tech aesthetic, combining dark textured finishes with vibrant yellow accents to create a strong brand identity and energetic atmosphere. The ceiling features a dynamic arrangement of linear LED lighting, enhancing both visibility and visual impact while emphasizing the technical character of the space.

Custom metal mesh panels and wall treatments were carefully integrated to reflect durability and automotive strength, while maintaining a clean and organized workflow environment. The design ensures maximum efficiency for quick service operations, with a clear layout and robust material selection suitable for high-traffic use.

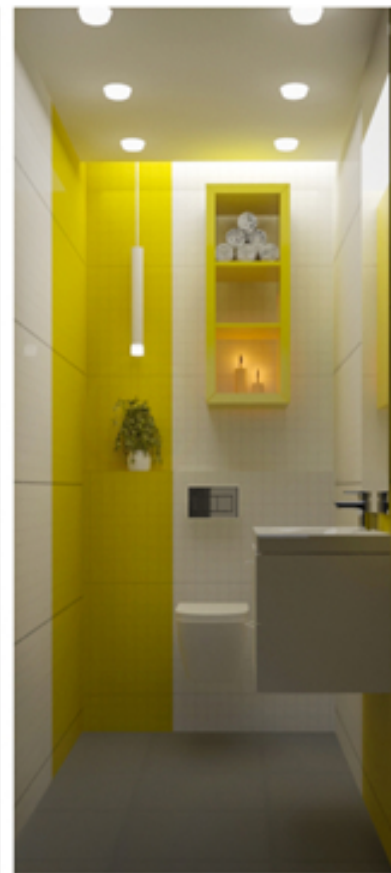
This project represents a perfect balance between design, branding, and functionality, creating a distinctive and memorable customer experience aligned with Ador Auto's fast and professional service philosophy.



AFTER EXECUTION



DESIGN (BEFOR)



 MEP SYSTEM



VERTIX

Our workforce at Vertex represents the highest standards of professionalism, discipline, and technical expertise. With a strong commitment to safety, quality, and teamwork, our skilled crews ensure efficient execution and outstanding results on every project.



**InfraRoad
Binyah** L.L.C.

On going project

INFRAROAD-BINYAH JV

QIDDIYA RESORT CORE DISTRICT

Project ID/Description: IB.0003 - JANADRIYAH INFRASTRUCTURE
PACKAGE POWER NETWORK WORKS





**InfraRoad
Binyah** L.L.C.

On going project

INFRAROAD-BINYAH JV
QIDDIYA RESORT CORE DISTRICT
Project ID/Description: IB.0003 - JANADRIYAH INFRASTRUCTURE PACKAGE
POWER NETWORK WORKS (MV/LV) CABLE



22 Sept 2025 9:53:43 a





ARABIAN WIRE INDUSTRIAL COMPANY

QIDDIYA RESORT CORE DISTRICT
Project Description:
SECURITY FENCE INSTALLATION





Implementation of substation
Relocation for All project Phases
Contract

Wadi Hanifa Project





**InfraRoad
Binyah** L.L.C.

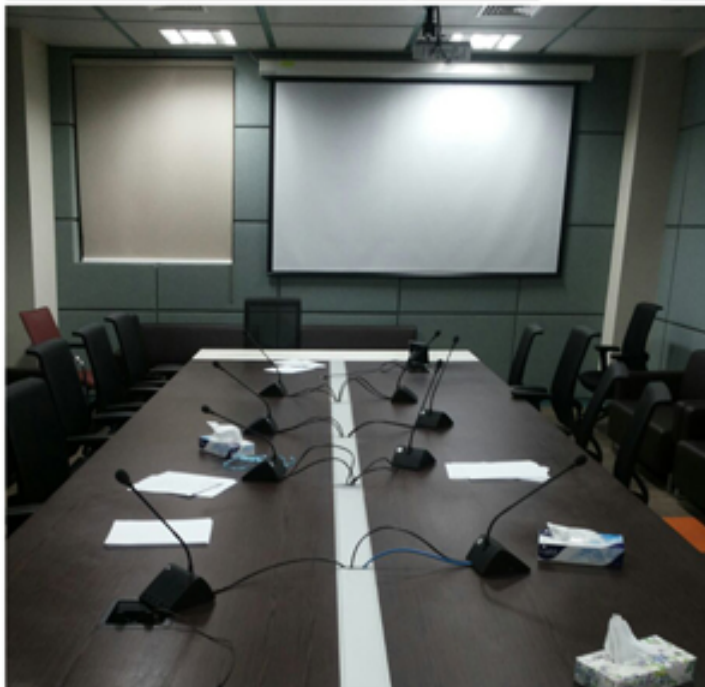
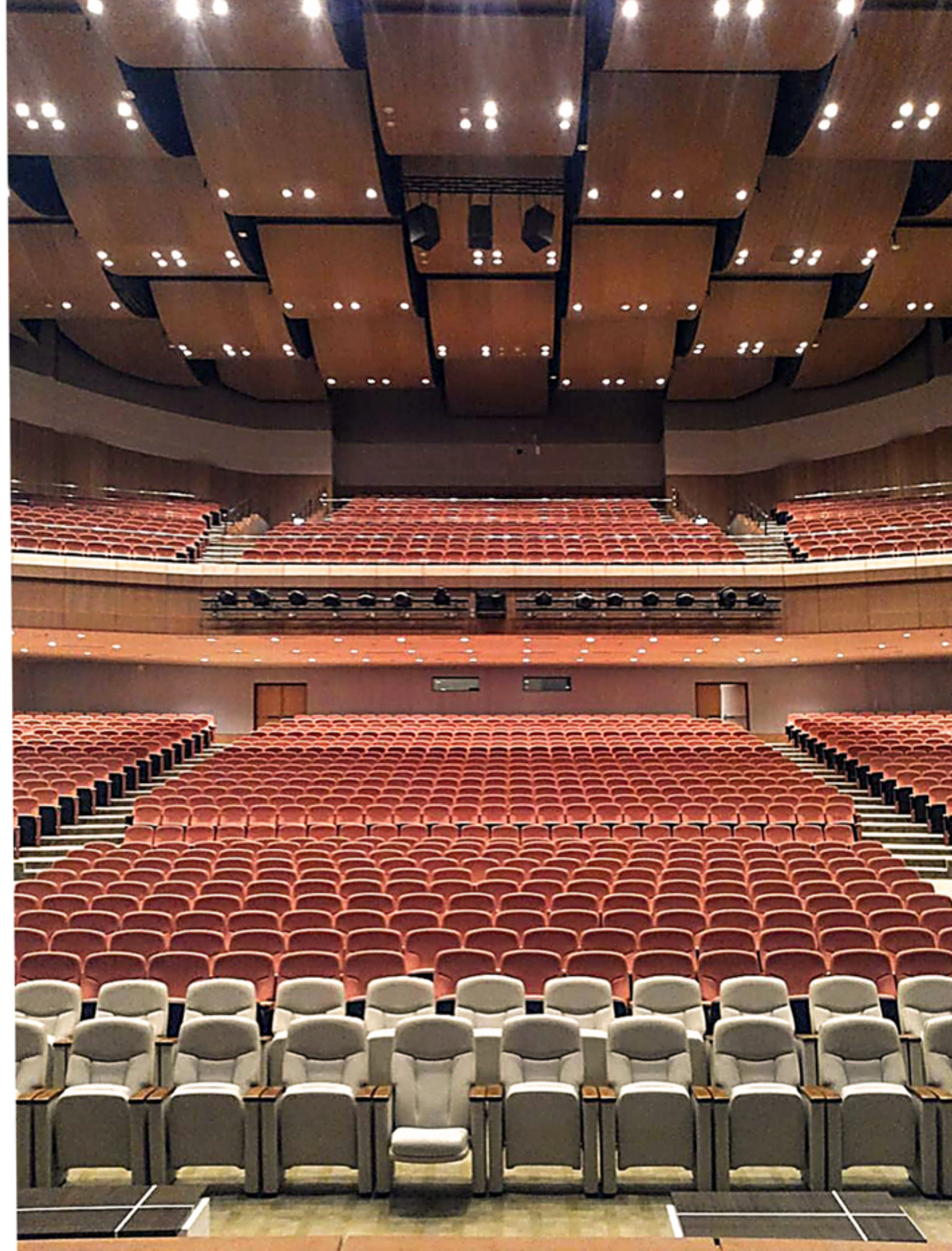
InfraRoad Binyah L.L.C.
Supply, Apply Generator
& MAINTENANCE

12 Dec 2024 at 3:52:00 PM
ضرماء 13776
Saudi Arabia



King Saud University - Riyadh, KSA

Execution of meeting rooms and smart room systems across approximately 305 spaces. The scope included the installation and integration of advanced audiovisual systems such as speakers, microphones, projectors, and motorized screens. Additionally, the project covered complete cable laying, testing, and termination, along with MV/LV/LC electrical works, ensuring high-performance and fully coordinated smart environments.





Saudi Electricity Company
Riyadh / KSA

Modification and upgrade of the main
stations of Riyadh area networks
Electrical Works.

- Electrical Protection Systems

الشركة السعودية للكهرباء
Saudi Electricity Company

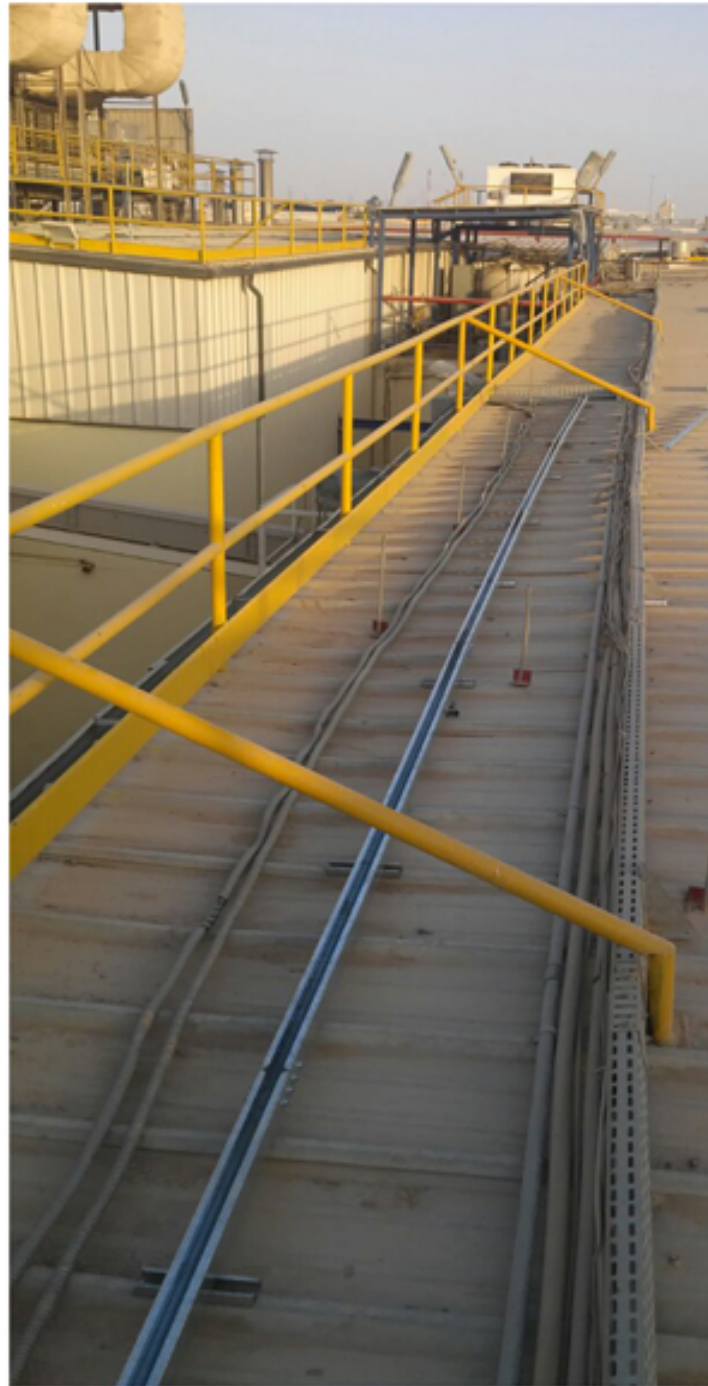




PEPSICO
Saudi Snack Foods Co. Ltd.

PEPSICO Factory Riyadh / KSA

Installation of fiber-optic cables and special data cables for machine manufacturing Automation Works, Connecting parts with factory control Panels.



Maintenance for Substation,

Petrol Pumps, Earthing, Lightning System





Installed Erthing & Lightning System
MV & L V Cable Pulling .
Riyadh Park



Boulevard city - missi studio

Sela Company

Mechanical Duct Works





WORLD DEFENSE SHOW

المقاولون المبتكرون للمعايير المتطورة
INNOVATIVE CONTRACTORS for ADVANCED DIMENSIONS

Installation of Low Current System
(Fire Alarm, Data ,CCTV , PA)



سرك
SIRC

CIVIL WORK



 MATERIALS AND PRODUCTS

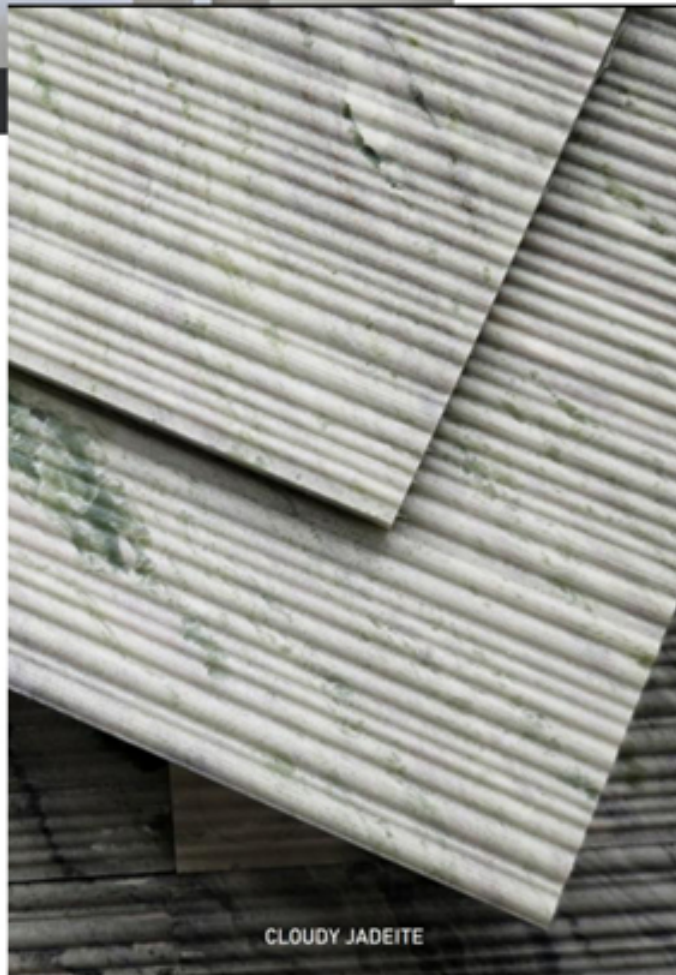
3D MARBLE PANEL
-Flat Series



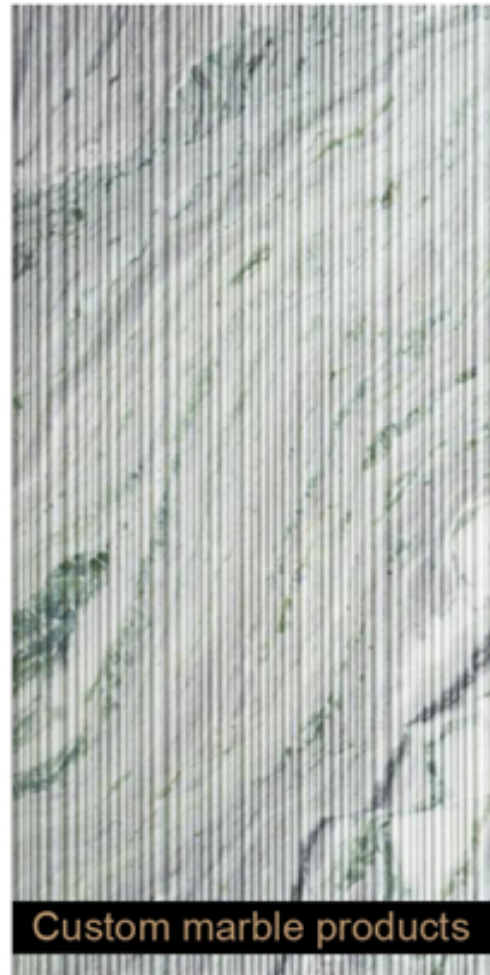
For every site there is an ideal use ..
For every use there is an ideal site ..
Through our strong network of trusted partners and top-tier manufacturers in China (Greater), we offer a curated selection of high-quality, custom-made products tailored to meet premium project requirements.



PLATINUM



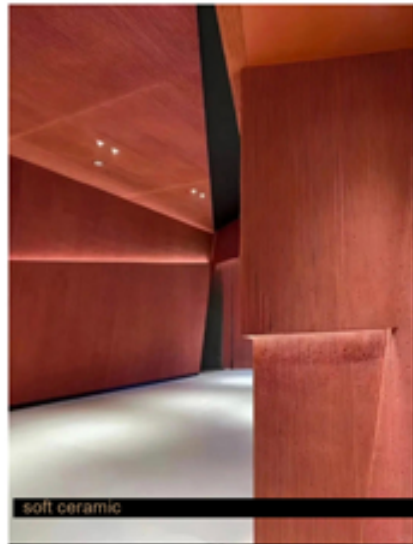
CLOUDY JADEITE



Custom marble products

3D MARBLE PANEL -Groove Series

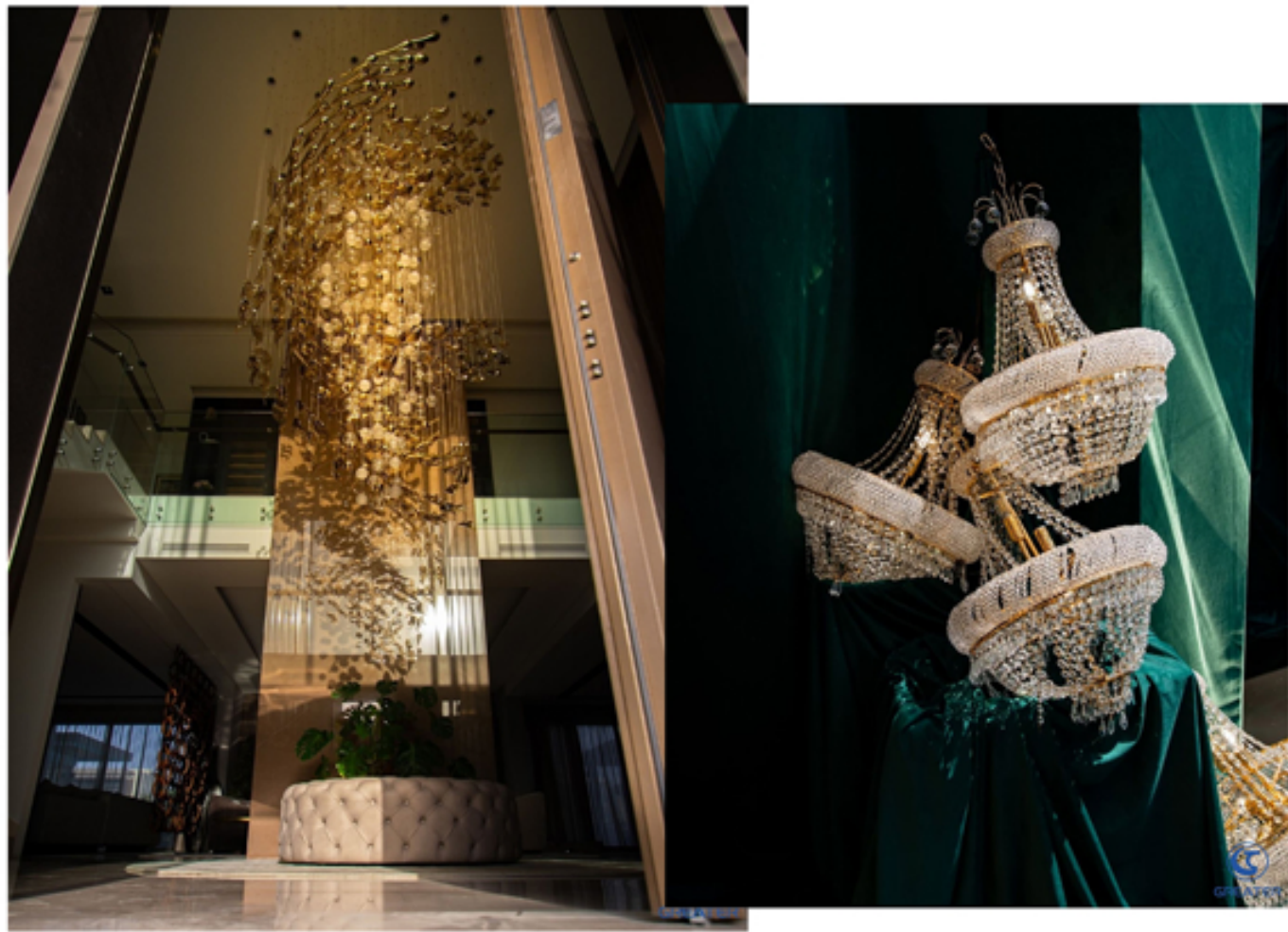




Vertex benefits from strong connections and strategic partnerships in China, enabling us to source and produce custom-made materials, unique textures, and bespoke chandeliers tailored to each project. This collaboration allows us to deliver high-quality, exclusive design elements with flexibility in customization, ensuring every space reflects a distinctive and refined identity.

Please refer to the product catalog for more products.







GREATER Company - Strategic Partner

GREATER Company is one of our trusted partners in China, specializing in the supply of high-quality materials, customized interior products, and decorative lighting solutions. With a strong industrial base and advanced manufacturing capabilities, GREATER provides a wide range of products including finishes, furniture elements, and bespoke chandeliers tailored to unique design requirements.

Through this collaboration, we are able to offer our clients access to custom-made materials, innovative designs, and competitive pricing, while maintaining high standards of quality and precision. GREATER also supports us with backup design solutions and rendering services, ensuring flexibility and efficiency throughout the project lifecycle.

This partnership strengthens our ability to deliver complete, high-end interior and architectural solutions, combining international design expertise with reliable production and supply from China.



airport restaurant Rendering



Materials Exhibition Hall Rendering



Traditional Chinese Medicine Rendering



Office Rendering



Workshop Rendering



Italian-Style Light Luxury Duplex Home Rendering



Radio and Television Bureau Dormitory Rendering



Cream-Style Home Rendering



Chinese-Style Retro Home Decoration Renderings



Renderings of Home Furnishing Store

A stylized logo of a bird with its wings spread, rendered in a golden-brown color. The bird is positioned to the left of the text.

THANK YOU